

ESCALATING  
*INVESTMENT REFUGEES*  
IN MINDANAO ISLAND  
(PHILIPPINES)

By Carl Cesar C. Rebuta

Workshop on Mining, Law, and Equity  
SOAS, University of London

# outline

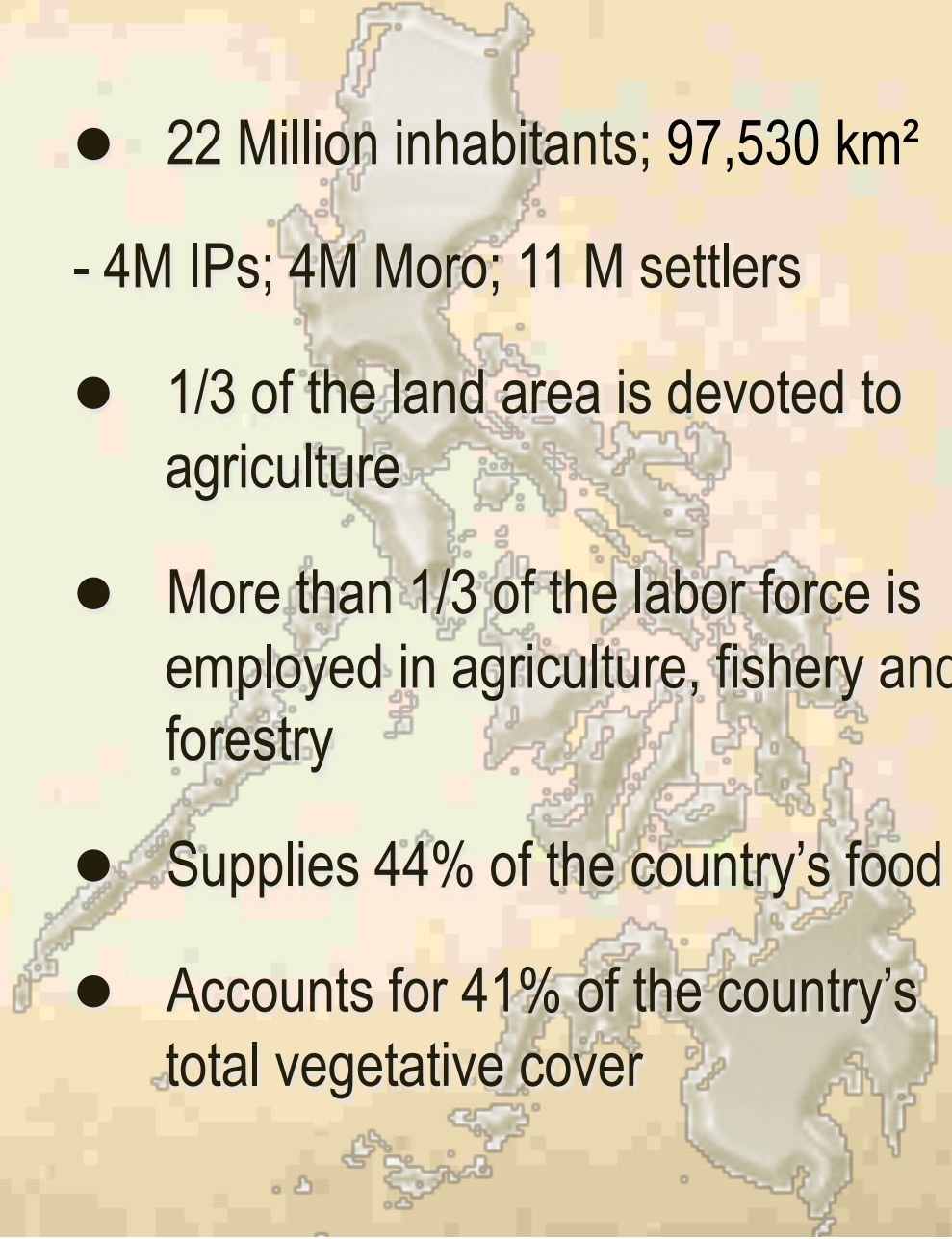
- Landscape of Mindanao
- Influx of Investments
- Issues and Concerns
- Investment Refugees
- Ways forward



# Landscape of Mindanao



- 22 Million inhabitants; 97,530 km<sup>2</sup>  
- 4M IPs; 4M Moro; 11 M settlers
- 1/3 of the land area is devoted to agriculture
- More than 1/3 of the labor force is employed in agriculture, fishery and forestry
- Supplies 44% of the country's food
- Accounts for 41% of the country's total vegetative cover



# Landscape of Mindanao



- (46.52%) has the **HIGHEST POVERTY INCIDENCE.**

In fact, Mindanao is home to 7 of 10 poorest provinces in the Philippines

- (46.52%)
- (22.2%) share to **NAT'L GROWTH.**
- **GOLD ORE – 48% of the national gold reserves**
- **NICKEL STOCKS – 63% of the national nickel reserves**

# Landscape of Mindanao

*This is Paradise*



# Influx of Investments

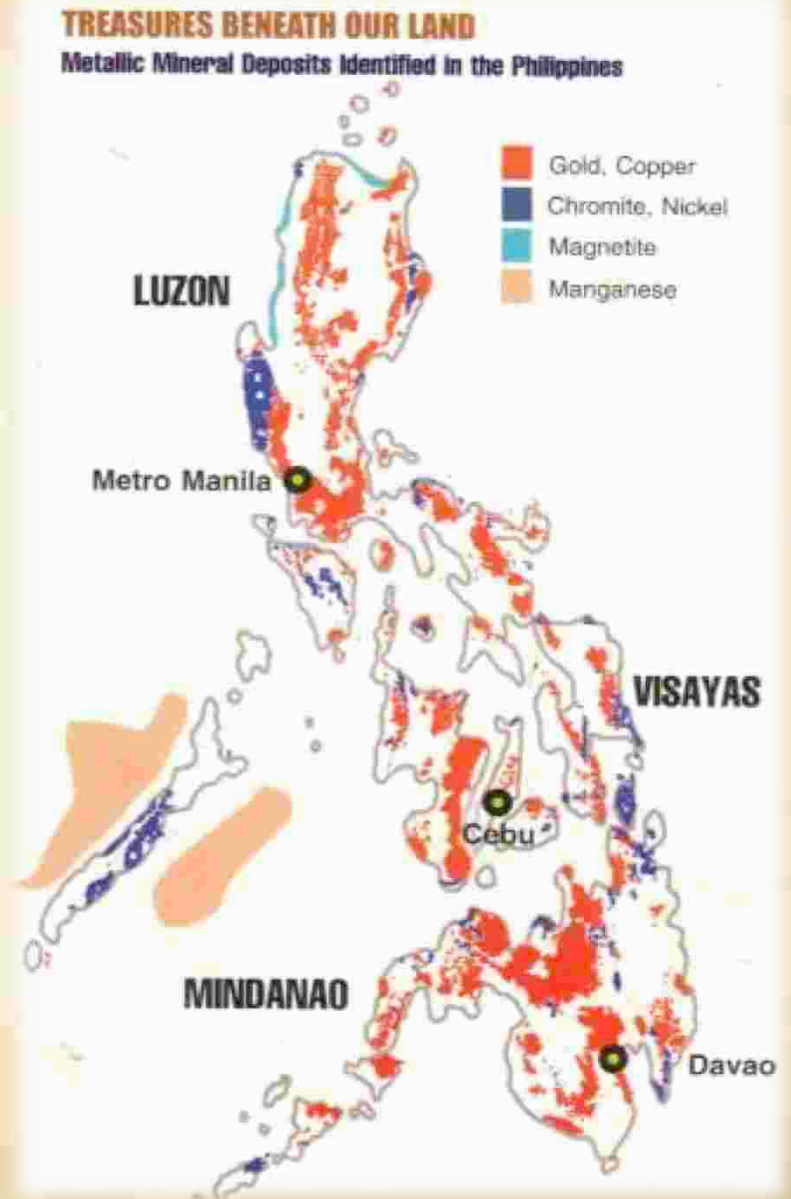
## ○ MINING

### Approved

- 15 EP
- 1 FTAA
- 2 MPP
- 66 MPSA

### Pending

- 4 EPA
- 4 APSA



# Influx of Investments

## ○ MINING



# Influx of Investments

- Logging –in the guise of Tree Plantation



Gingoog City, Misamis Oriental

IFMA Total – 566,355 hectares



Lake Sebu, South Cotabato



# Issues and Concerns

## Violations of Human Rights (ESCR)

- *Violations and abuses on their basic rights as IPs;*
- *Militarization and acts of violence and intimidation;*
- *Establishment of checkpoints and blockade on the entry of food and other basic necessities;*
- *Disrupting education and delaying construction of school building;*
- *Disrupting travel from farm to market road;*
- *Prohibition on the entry of health services;*
- *Destruction of their fishing and hunting grounds, including their herbal medicine area;*
- *Violation of their religious rights;*

# Issues and Concerns

## Damages or Costs brought about by Mining

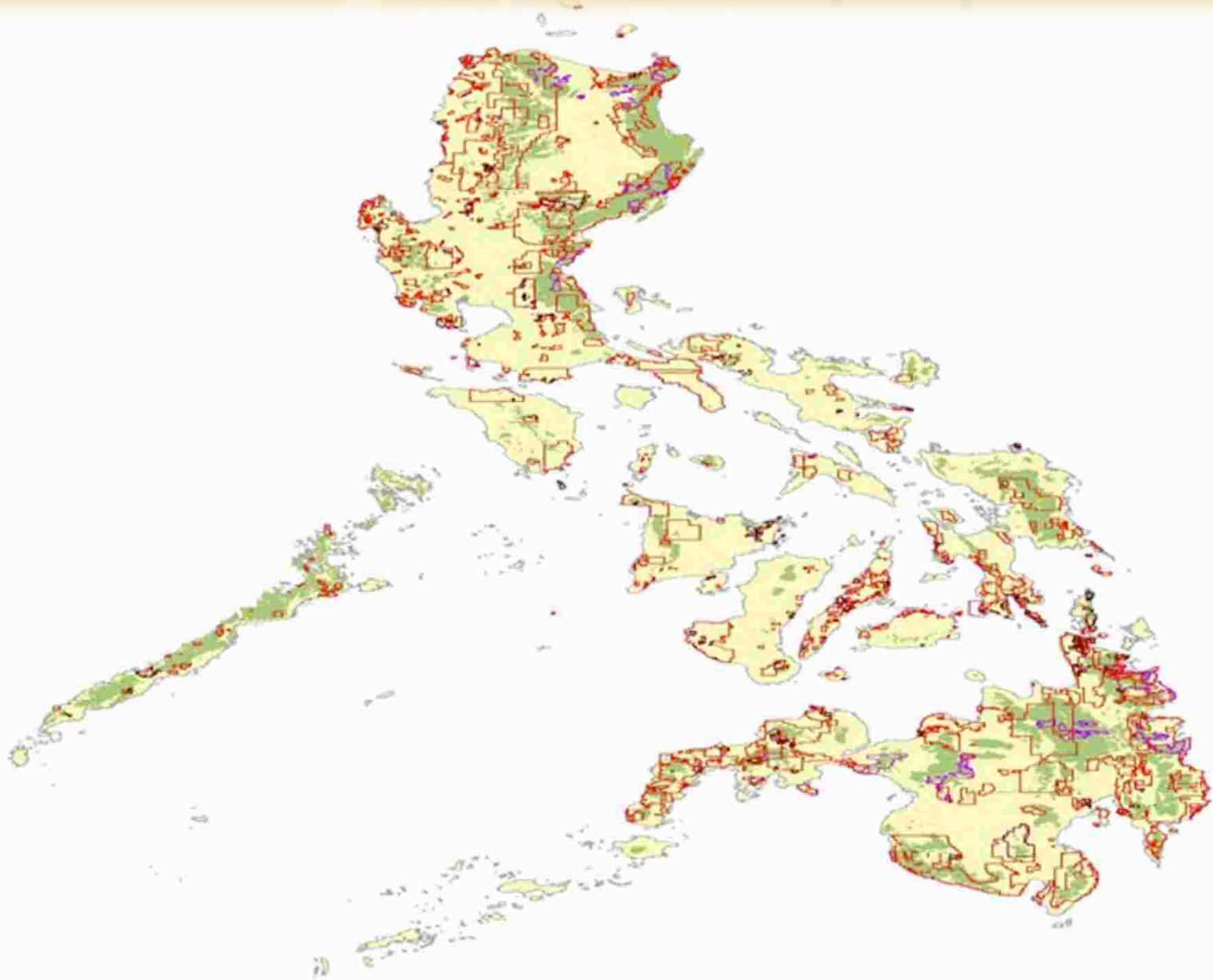
- Displacement
- Threat to food security
- Pollution
- Diminished water supply
- Competition for energy supply and distribution
- Logging/ Timber rights
- Easement right
- Right to use explosives

# Issues and Concerns

## Environmental Impacts of Mining

- Open-pit mining as method of Mining is employed by all the operations today
- As an archipelago with narrow, steep and irregular-shaped islands, and mountainous terrain, mining activities (in the uplands) will impact downstream, destroying ecosystems along the way
- 14 major rivers are already contaminated by mining residues (Tujan and De Guzman, 2002), which also results in the contamination of coralline and sea grass areas as freshwater mixes with seawater
- Contamination of water supply
- Flash floods due to forest denudation

# Investment Refugees



Haribon

# Investment Refugees



# Investment Refugees



# Investment Refugees

- Displaced natives or local communities as *“investment refugees”*, escalating number communities are displaced to “give way to development projects with promising package to host communities and local governments units for a time being undermining the long-term effects.

# Ways forward



- Strengthening Organization/Community Cohesion
- Capacity Building and Skills enhancement of the Community leaders
- Set-up Community Paralegal Team
  - Community Planning
  - Legal Strategy Plan
  - Campaign Plan
- Alliance Building



○ **Daghang Salamat! (Thank You so much )**

