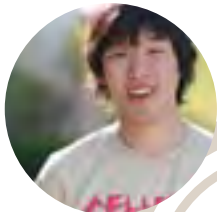


JRC Annual Review

日本研究センター



Japan Research Centre ANNUAL REVIEW

ISSUE 61: September 2010 - August 2011



SOAS



The School of Oriental and African Studies (SOAS) is a college of the University of London and the only Higher Education institution in the UK specialising in the study of Asia, Africa and the Near and Middle East.

SOAS is a remarkable institution. Uniquely combining language scholarship, disciplinary expertise and regional focus, it has the largest concentration in Europe of academic staff concerned with Africa, Asia and the Middle East.

On the one hand, this means that SOAS remains a guardian of specialised knowledge in languages and periods and regions not available anywhere else in the UK. On the other hand, it means that SOAS scholars grapple with pressing issues - democracy, development, human rights, identity, legal systems, poverty, religion, social change - confronting two-thirds of humankind.

This makes SOAS synonymous with intellectual excitement and achievement. It is a global academic base and a crucial resource for London. We live in a world of shrinking borders and of economic and technological simultaneity. Yet it is also a world in which difference and regionalism present themselves acutely. It is a world that SOAS is distinctively positioned to analyse, understand and explain.

STUDYING AT SOAS

The international environment and cosmopolitan character of the School make student life a challenging, rewarding and exciting experience. We welcome students from more than 130 countries, and more than 45% of them are from outside the UK.

The SOAS Library has more than 1.5 million items and extensive electronic resources. It is the national library for the study of Africa, Asia and the Middle East and attracts scholars all over the world.

SOAS offers a wide range of undergraduate, postgraduate and research degrees. More than 400 degree combinations are available in social sciences, arts, humanities and languages, all with a distinctive regional focus taught by world-renowned teachers in specialist faculties.

The School is consistently ranked among the top higher education institutions in the UK and the world. The School's academic excellence has also been recognised in research assessment exercises (RAEs).

SOAS offers a friendly, vibrant environment right in the buzzing heart of London with the capital's rich cultural and social life on its doorstep.



CONTENTS

4	Centre Members
4	Member's News
8	News
10	Events 2010 - 11
16	Research Report
17	Honorary Appointments
20	SISJAC Fellows
21	Research Students
22	Awards & Grants
25	SOAS Research & Enterprise
27	Join the Centre



www.soas.ac.uk

School of Oriental and African Studies
University of London
Thornhaugh Street
Russell Square
London WC1H 0XG

Tel: +44 (0)20 7637 2388
Fax: +44 (0)20 7436 3844

We welcome you to become part of the SOAS experience and invite you to learn more about us by exploring our website.

Web: www.soas.ac.uk/admissions/
Web: www.soas.ac.uk/visitors/

SOAS Library
Tel: +44 (0)20 7898 4163
Fax: +44 (0)20 7898 4159
Web: www.soas.ac.uk/library/

Letter from the Chair



OUTGOING CHAIR

ANGUS LOCKYER

(Sept 2008 - July 2011)

Time flies. It hardly seems more than a few terms since I took over as Chair from Tim Screech, but the time has come to step down and hand things over to Steve Dodd, who will take us on to bigger and better things. The JRC is blessed to have so many engaged and active staff working

in Japanese Studies, urged on by our energetic students and by our good friends around the world.

Looking back over the last three years, it's clear how much we have been able to do thanks to their support, underpinned by the generous funding of Kayoko Tsuda and Meiji Jingu, enriched through our relationships with the Sainsbury Institute for the Study of Japanese Arts and Cultures and many others, and enlivened by the presence of our colleagues as Research Associates and Visiting Scholars.

Among the many highlights have been the ongoing series of workshops connected to Drew Gerstle's project on shunga, soon to come to fruition in an exhibition; the SOAS translation workshop headed by Chris Gerties, now in its second year; and the triennial conference of the British Association of Japanese Studies, shepherded in large part by Helen Macnaughtan, which saw some 200 Japanologists gather at SOAS in September last year.

The conference was only the beginning of another busy year, with annual lectures by Professors Richard Bowring and Josh Fogel, an international workshop on postwar Japan, again organized by Chris Gerteis, soon to become an edited volume, and our regular series of seminars, with speakers from London, the UK, Europe and beyond, the details of which you can find in the following pages.

But the year as a whole was overshadowed by the tragic events in northeast Japan earlier this year. SOAS students were immediately active in raising funds for relief activities and we have held a number of events since to reflect on the disaster and provide support for those affected. We are now planning a photography exhibition in the Brunei Gallery early next year to coincide with the first anniversary of the disaster on 11 March.

We are also sorry to have said farewell to two of our most active JRC members. John Breen has taken up a permanent position at the International Research Centre for Japanese Studies in Kyoto and John Carpenter at the Metropolitan Museum of Art in New York. Envy aside, we wish the two Johns all the best in their new positions and are delighted that they have agreed to remain Associates of the JRC.

The final words must be ones of thanks, to my colleagues for their support over the last three years, but above all to Jane Savory and Rahima Begum in the Centres and Programmes Office, without whom nothing would be done. Visitors to SOAS are always a little surprised by how much what seems like a small institution is able to accomplish. That we can is due in largest part to the efforts of Jane and Rahima, to whom we all remain indebted.



INCOMING CHAIR

STEPHEN DODD

(Aug 2011 - July 2014)

Let me first of all say what an honour it is to welcome everyone back to SOAS at the beginning of a new academic year as the new Chair of the Japan Research Centre. I have been a regular participant of the JRC since I first came to teach modern Japanese literature at SOAS in 1994, and

I am very aware of the important role that the centre plays in the lives of all of us with our extraordinary range of interests in things Japanese. In particular, the Wednesday evening seminars are an opportunity not only to improve our specialist areas of knowledge, but also to gain entirely new insights into Japan. And of course, the JRC provides a fantastic opportunity for those based in the UK to get to know visiting scholars from Japan and other countries. "Community" is a horribly overused word, but in our case it rings true. During the next three years, I will do my best to ensure that the JRC community remains a focal point for our study and our friendships.

But first things first. I know that everyone will wish to join me in offering heart-felt thanks to Angus Lockyer for the three years of hard effort he has put in to ensure that the JRC has gone from strength to strength. Not only has he been an outstanding ambassador for our centre at home and abroad, he has also (very impressively!) left the JRC in an enviable financial position. Though humbled by his accomplishments, I will do my best to continue the good work.

I have barely begun to settle into my role as Chair, but already I have experienced one of the pleasures of that position. I am delighted to note that Prof. Cecile Sakai, from the University of Paris, has agreed to be our speaker at this autumn's Meiji Jingu lecture. The annual Meiji lecture, together with the Tsuda lecture that takes place in the New Year, provide celebratory highpoints for our JRC calendar. But let me make it clear that I am also very open to any other suggestions about events under the JRC umbrella, so any suggestions are welcome.

In my first letter as Chair, let me finish with some general reflections on why I think our participation in the JRC is particularly relevant at the moment. During the previous year, I was on sabbatical in Japan. I was there when the terrible disasters hit on March 11th. I was far from the centre of the disaster in Kyoto, so I was not affected directly. However, every one of us is very aware of the huge impact that the events continue to have on the people of Japan. Not least, the ongoing crisis related to nuclear power stations continues to impact on the daily lives of the Japanese. My own studies have taught me how profoundly the Great Kantō earthquake of 1923 changed Japanese culture, and it is clear that this present disaster will also influence events in Japan in unforeseen ways for years to come. For those of us with close ties to Japan but watching events from afar, the question is how we can help. People respond in their individual ways, but as members of the JRC we are in a very special position of being able to keep a spotlight on Japan at this difficult time, and ensure that its people, its history, its language, its art and its literature continue to matter, now and in the future.

I have left the most shocking news to the end. Since there will be times when it might be required, I am thinking of buying a suit.

CURRENT JRC MEMBERS

Professor Timothy H BARRETT
Professor of East Asian History
Department of the Study of Religions
tb2@soas.ac.uk

Dr Alan CUMMINGS
Teaching Fellow in Japanese
Department of the Languages and
Cultures of Japan and Korea
ac50@soas.ac.uk

Dr Stephen H DODD
Senior Lecturer in Japanese
Chair of Japan Research Centre
Department of the Languages and
Cultures of Japan and Korea
sd5@soas.ac.uk

Dr Lucia DOLCE
Senior Lecturer in Japanese Religion
and Japanese
Department of the Study of Religions
ld16@soas.ac.uk

Professor Andrew GERSTLE
Professor of Japanese Studies
Department of the Languages and
Cultures of Japan and Korea
ag4@soas.ac.uk

Dr Chris GERTEIS
Lecturer in History of Contemporary Japan
Department of History
cg24@soas.ac.uk

Dr Noriko IWASAKI
Lecturer in Language Pedagogy
Department of Linguistics
ni3@soas.ac.uk

Ms Misako KANEHISA
Senior Lecturer in Japanese
Department of the Languages and
Cultures of Japan and Korea
mk7@soas.ac.uk

Mrs Miwako KASHIWAGI
Senior Lecturer in Japanese
Department of the Languages and
Cultures of Japan and Korea
mk56@soas.ac.uk

Dr Griseldis KIRSCH
Lecturer in Contemporary Japanese Culture
Department of the Languages and
Cultures of Japan and Korea
gk10@soas.ac.uk

Dr Mika KIZU
Lecturer in Japanese
Department of the Languages and
Cultures of Japan and Korea
mk89@soas.ac.uk

Ms Fujiko KOBAYASHI
Librarian (Japan and Korea)
Library and Information Services
fk2@soas.ac.uk

Dr Yuka KOBAYASHI
Lecturer in Chinese Politics
Department of Politics and
International Studies
yk37@soas.ac.uk

Professor Costas LAPAVITSAS
Professor of Economics
Department of Economics
cl5@soas.ac.uk

Dr Angus LOCKYER
Lecturer in the History of Japan
Department of History
al21@soas.ac.uk

Dr Helen MACNAUGHTAN
Lecturer in International Business
and Management (Japan)
Department of Financial and
Management Studies
hm39@soas.ac.uk

Dr Dolores P MARTINEZ
Reader in Anthropology with
reference to Japan
Department of Anthropology and Sociology
dm6@soas.ac.uk

Mr Satoshi MIYAMURA
Lecturer in Economics
Department of Economics
sm97@soas.ac.uk

Dr Barbara PIZZICONI
Senior Lecturer in Applied
Japanese Linguistics
Department of the Languages and
Cultures of Japan and Korea
bp3@soas.ac.uk

Dr Nicole ROUSMANIERE
Research Director, Sainsbury Institute for the
study of Japanese Arts and Cultures
(Honorary Lecturer)
Department of the History of
Art and Archaeology
n.rousmaniere@sainsbury-institute.org

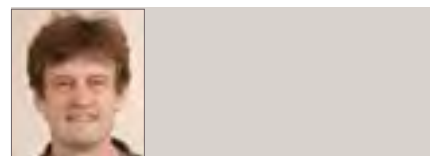
Ms Sonja RUEHL
Fellow in Financial and Management Studies
Department of Financial and
Management Studies
sr2@soas.ac.uk

Professor Timon SCREECH
Professor of the History of Art
Department of the History of
Art and Archaeology
ts8@soas.ac.uk

Dr Isolde STANDISH
Senior Lecturer in Film and Media Studies
Centre for Media and Film Studies
is16@soas.ac.uk

Dr Akiko YANO
Research Fellow
Department of the Languages and
Cultures of Japan and Korea
ay8@soas.ac.uk

MEMBERS NEWS



John BREEN

John Breen spent 2010-2011 at Nichibunken in Kyoto, his third year of unpaid leave from SOAS. In autumn 2010, he got an offer from Nichibunken he could not refuse, and decided the time had come for him to change tack, leave SOAS with feelings of great sadness and spend the rest of his academic life in Kyoto. He remains attached to the JRC in his capacity as Research Associate.

In the last year, he has given talks and participated in conferences in Jakarta, Honolulu, London, and Jerusalem. Within Japan, he gave papers at Nichibunken, Dōshisha, Ocha no mizu joshi daigaku, Meiji jingū and Tsurugaoka hachimangū. At present, he is working on a history of the Ise shrines (in English), with Mark Teeuwen of Oslo University, and a modern history of Ise (in Japanese).

Publications

'*Shinto: kindai Ise kō*', Hikaku bungaku kyōiku kenkyū senta- kenkyū nenpō, 7 (2011).

'*Chōhei kensa kō*' in Susuki Sadami ed., Japan to-day: senjiki Bungei shunjū no kaigai hasshin, Tokyo: Sakuhinsha, 2011.

'*Shōwa tennō to Yasukuni jinja*' in Susuki Sadami ed., Japan to-day: senjiki Bungei shunjū no kaigai hasshin, Tokyo: Sakuhinsha, 2011.

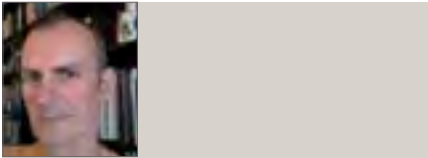
'*Senkyōshi Jon Bachera no isan*', in Susuki Sadami ed., Japan to-day: senjiki Bungei shunjū no kaigai hasshin, Tokyo: Sakuhinsha, 2011.

'*Kanō Jigōrō to Nihon no orinpicchu mu-bumentō*' in Susuki Sadami ed., Japan to-day: senjiki Bungei shunjū no kaigai hasshin, Tokyo: Sakuhinsha, 2011.

'*Resurrecting the sacred land of Japan: the state of Shinto in the 21st century*', Japanese Journal of Religious Studies, 37, 2 (2010).

'*Hie sha kinsei no kaimaku*', Happyō ronbunshū, Tokyo: Shintō kokusai gakkai, 2010.

Talks, Travels & Publications



Steve DODD

Stephen Dodd was on sabbatical during the academic year 2010-2011, thanks to two awards. With a long-term research fellowship from the Japan Society for the Promotion of Science, he carried out research at Ritsumeikan University, Kyoto, during term one in collaboration with Prof. Shigemi Nakagawa. An AHRC Fellowship allowed him to continue his research in Kyoto during the second term.

Talks

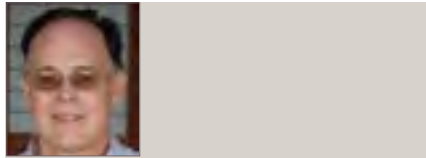
Stephen also participated in a workshop, entitled The Abe Kobo International Workshop, at Ritsumeikan, on 3rd March. In June, 2011, he visited the Yugashima Onsen region in the Izu Peninsula as part of his research into Kajii.

During the year, he has had the opportunity to discuss his research with a number of professors from Waseda University, Tokyo, and Nichibunken, in Kyoto.

On June 24th, 2011, he gave a presentation on Itô Sei's story, "Yûki no machi" ("Streets of Fiendish Ghosts"), as part of the Architecture and Literature Study Group (Kenbunken) at Doshisha University. This was in preparation for a paper, entitled "Architecture of a City: Memories Unchained in Itô Sei's Streets of Fiendish Ghosts," that he gave in August 2011 as a member of a panel around the theme of architecture and literature (title, Tangible Narratives: The Significance of Architecture in Modern Japanese Literature) at the EAJS Conference in Tallin, Estonia. His article, "Modernism and its Endings: Kajii Motojirô as Transitional Writer," appears in the edited book, Rethinking Japanese Modernism (ed. Roy Starrs, Global Oriental, due August, 2011).

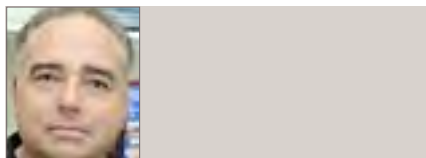
Publications

Most of the time, Steve has been writing a book manuscript, entitled *The Youth of Things: Life and Death in the Age of Kajii Motojirô*, which he aims to complete during the autumn, 2011. The book includes a series of essays related to Kajii, and the first full translation into English of his twenty major short stories.



Andrew GERSTLE

Andrew Gerstle was involved again this past year in the International Shunga Project (see page 10), giving four presentations, including a JRC seminar in November 2010, and in March 2011 he published *Edo onna no shunga-bon: tsuya to warai no fûfu shinan* 『江戸をんなの春画本-艶と笑の夫婦指南』 from Heibonsha, an analysis of erotic parodies of 18th-century women's and other practical textbooks. He participated in the conference "Publishing the Stage: Print and Performance in Early Modern Japan" at the University of Colorado in early March 2011. His paper 'Creating Celebrity: Poetry in Osaka Actor Surimono and Prints' was then published in Keller Kimbrough and Satoko Shimazaki, Publishing the Stage: Print and Performance in Early Modern Japan, University of Colorado Center for Asian Studies, July 2011.



Christopher GERTEIS

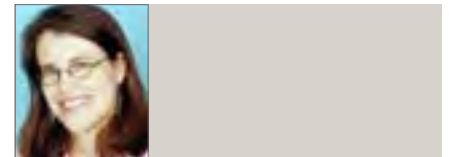
This academic year Christopher Gerteis hosted a workshop that brought to SOAS all the contributors to the edited book *Mirror of an Uncertain Age: Revisiting the History of Post-war Japan*, which he is co-editing with Timothy S. George (University of Rhode Island).

With Angus Lockyer, Christopher also ran the second year of the Translation Workshop in Japanese Studies, sponsored by the Nippon Foundation, which brought 16 post-graduate students and four academics to SOAS in order to workshop their translations of assigned Japanese language academic books and articles for publication in English.

He gave lectures at Columbia University, Yale University, the University of Rhode Island and the Free University, Berlin, and appeared as a regular commentator for the BBC during

the weeks following the Tohoku Earthquake. He also moderated the roundtable discussion 'After the Shock: Prospects for Recovery and Reconstruction in Post-Quake Japan,' a co-production of the JRC and the Japan Society.

Christopher also advised a variety of productions touching on the subject of Japan. Most recently he has served as historical advisor to the Universal Pictures production '47 Ronin' starring Keanu Reeves, Hiroyuki Sanada and Ko Shibasaki, which will be released in November 2012.



Griseldis KIRSCH

Griseldis Kirsch was invited to introduce Japanese TV drama at the Japanese film festival Nippon Connection in April 2010 in Frankfurt. Later that year, she presented her new research on representations of the memory of the Second World War on German and Japanese TV at the conference of the British Association for Japanese Studies at SOAS in September 2010. In January 2011, she was invited to give a lecture on Visions of a Heterogeneous Japan? *Imagi(n)ing Asian Others in Japanese TV Drama*, at the Nissan Institute for Japanese Studies in Oxford.

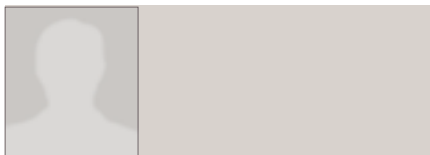
Griseldis is co-convening the Anthropology and Sociology section for the conference of the European Association of Japanese Studies. Griseldis will be on sabbatical in 2011/12.

Publications

Together with Hilaria Gössmann: *Crossing Borders, Building Bridges: 'Asian Stars' in Japanese TV Drama*. In: Kim Jeongmee (ed.): *Reading Asian Television Drama. Crossing Borders and Breaking Boundaries*. London: I.B. Tauris. (forthcoming February 2012)

"Visionen eines heterogenen Japan? Internationalität im japanischen Fernseh-drama." (Visions of a Heterogeneous Japan? Internationality in Japanese TV Drama) In: Köhn, Stephan and Michael Schimmelpfennig (ed.): *China, Japan und das „Andere“: Ostasiatische Identitäten im Zeitalter des Transkulturellen*. (China, Japan and the Other. East Asian Identities in the Age of the Transcultural) Wiesbaden: Harrassowitz. (forthcoming October 2010)

Talks, Travels & Publications



Mika KIZU

Mika Kizu continues to work on syntax and second language acquisition in Japanese, focusing on null subject constructions, style shifting (with Noriko Iwasaki) in L1 and L2 spoken Japanese, and L2 acquisition of modality in Japanese (with Barbara Pizziconi and Noriko Iwasaki).

Talks

2011 - 'A new perspective on subject omission in Japanese: some implications for L2 pedagogical practice,' (in the colloquium: Half a century on: what relevance does generative SLA have for language teaching?), American Association for Applied Linguistics 2011 Conference, Chicago, USA.

2011 - 'Shifting styles to express empathy and emotion in Japanese: L1 and L2 style shifts,' (with N. Iwasaki), American Association for Applied Linguistics 2011 Conference, Chicago, USA.

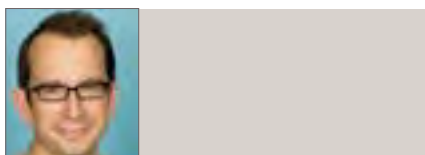
2010 - 'The acquisition of modal expressions in L2 spoken Japanese,' (with B. Pizziconi and N. Iwasaki), Center for Linguistics Colloquium/ Faculty of Humanities Special Lecture, Nanzan University, Japan.

2010 - 'The development of modality markers during study abroad in Japan,' (with B. Pizziconi and N. Iwasaki) the British Association of Japanese Studies Conference. SOAS, University of London.

Publications

(forthcoming) "Chapter 10: Modern Japanese" (with N. Tranter, U of Sheffield) in *The Language of Japan and Korea*. Nicolas Tranter (ed.), Routledge.

2010 - 'Nihongo-bunretsu-bun ni okeru chookyori-izon no yoonin-do nit suite (On the degree of acceptability of long distance dependencies in Japanese cleft constructions),' in N. Hasegawa (ed.), *Scientific Approaches to Language: Pragmatic Functions and Syntactic Theory –in view of Japanese main clauses-* (2), pp. 61-76, Center for Language Sciences, Kanda University of International Studies.



Angus LOCKYER

Angus Lockyer came to the end of his twin terms as Chair of the Japan Research Centre and as Senior Editor of *Japan Forum*, the journal of the British Association of Japanese Studies. A serendipitous pleasure is that the forthcoming final issue of the journal for which he is responsible will include the first fruits of the first SOAS Translation Workshop, including a series of articles on the curious place that was Tokyo in the 1980s and one on the birth of *banzai*.

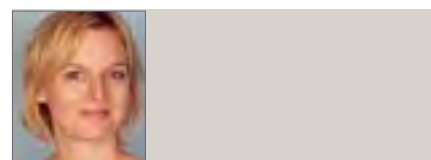
The first term was largely taken up with teaching and trying to come to terms with a new job as UG Tutor for History, subject to siege by some 300 students wanting to know the meaning of life, or at least regulations. But the term was also punctuated by a short but busy trip to Japan with Paul Webley, the Director of SOAS. They were invited by Meiji Jingu to join their 90th anniversary celebrations, which culminated with speeches in full academic regalia in front of an audience in the four figures, followed by a symposium for some 400 or so. The day set the tone for a busy and exciting week, meeting partners, colleagues, alumni and friends both in Tokyo and further south.

Later in November, Angus found himself in Germany, giving a talk about Japanese golf at the Free University in Berlin, followed by a seminar in Frankfurt on academic publishing for the German Association for Social Science Research on Japan. He was talking about golf again in December for the Japan Society here in London, in March at Cardiff University, in May in Hamburg, in July at a summer school in Heidelberg on the cultures of consumption, and finally at the European Association of Japanese Studies meetings in Tallinn in August, with some useful fieldwork in Northern Ireland in May. An essay on the history of Japanese golf will soon be appearing in an edited volume on consumption in Japan.

March was taken up in large part with the aftermath of the tragedy in northeast Japan. Like many colleagues here and overseas,

Angus appeared on a number of programmes in the week following the earthquake, including BBC Breakfast, News 24, Radio 4, and the World Service, as well as Sky News and CCTV, trying to provide some context for the horrific images coming out of Japan, to prevent the recourse to familiar stereotypes and to forestall the rush to judgment. One opportunity to do this at greater length was a talk at the Reform Club in May on 'The many gods of modern Japan'.

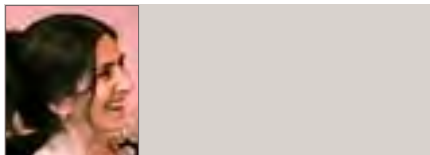
Much of the second half of the year, however, was devoted to things global. In February, Angus gave a seminar, 'What might a global history of the twentieth century look like?' to the Global History Seminar hosted by the Institute for the Historical Research and the University of Notre Dame. In May, he was invited to the annual conference of the LSE project on Useful and Reliable Knowledge in East and West (URKEW), at Cumberland Lodge. Finally, in June, visitors to the first SOAS Alumni Weekend suffered through 'A Short History of the World (in 50 minutes)'.



Helen MACNAUGHTAN

Helen Macnaughtan is currently researching the development and history of the automatic electric rice cooker, as a key Japanese household appliance. She has presented her research on this titled "Building up Steam as Consumers: women, rice-cookers and the consumption of everyday household goods in Japan" at a JRC seminar on 24th November 2010 and at the Geffrye Museum, London on 14th May 2011 as part of their "At Home in Japan" exhibition.

It will be published early 2012 in: Hunter, Janet & Penelope Francks eds., *The Historical Consumer: Consumption and Everyday Life in Japan, 1850-2000*, Palgrave Macmillan, forthcoming 2012.



Barbara PIZZICONI

Following up on their earlier study on Modality Acquisition (completed in 2010), Mika Kizu and Barbara Pizziconi are currently carrying out another project which will investigate more closely the way in which the year of study abroad impacts on students' understanding of modality-related concepts and forms. The international team of collaborators involves their esteemed former colleague Mrs Kazumi Tanaka (now at ICU, Japan), Dr Keiko Ikeda (Kansai University, Japan), and, internally, Noriko Iwasaki (Department of Linguistics), Misako Kanehisa, Miwako Kashiwagi, Miki Kawabata (all in the Department of Japan and Korea)

Talks

2011 Cognitive cultural models of notions of 'rudeness' in Japanese language, 6th International conference on Linguistic Politeness, Ankara, Turkey

2011 Japanese language pedagogy at SOAS, AIDLG (Italian Association of Teachers of Japanese), Cultural Institute of Japan/"La Sapienza" Rome University, Rome, Italy.

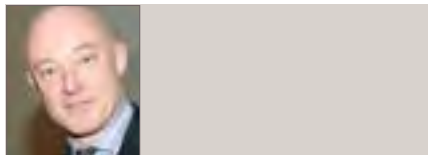
July 2011 Co-organized with Mika Kizu the workshop on the Acquisition of Modality.

Publications

2011 *Honorifics: the cultural specificity of a universal mechanism in Japanese, in Politeness in East Asia - Theory and Practice*, Sara Mills and Dániel Z. Kádár (eds.), Cambridge University Press

NEWS BITES: THE 2011 SOAS DIRECTOR'S TEACHING PRIZE

Dr Angus Lockyer was a runner-up for this year's Director's Teaching Prize, which recognises excellence in teaching, the promotion of learning within the School and the enrichment of our curriculum. Its purpose is to stimulate teaching and teaching-related scholarly and/or creative activities, particularly at undergraduate level.



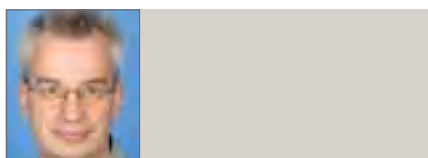
Timon SCREECH

Timon Screech continues to be Permanent Visiting Professor at Tama Art University, in Tokyo, and his visiting professor status at Meiji University has been renewed for a fourth year.

Publications

'Kutsuki Masatsuna - A Life' in, *Sakuraki Shin'ichi*, Helen Wang & Peter Kornicki (eds.), Catalogue of the Japanese Coin Collection (Pre-Meiji) at the British Museum (with special reference to Kutsuki Masatsuna), British Museum Research Publication No. 174 (London: British Museum Press, 2010)

'The Cargo of the New Year's Gift: Paintings from London for Asian Buyers, 1614', in Lieselotte Saurma, Monika Juneja & Anja Eisenbeiss (eds.), *The Power of Things and the Flow of Cultural Transformations* (Frankfurt: Deutscher Kunstverlag, 2010).



Peter SELLS

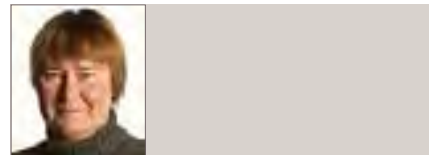
Talks

Negation at the Syntax-Semantics Interface. 9th workshop on Inferential Mechanisms and their Linguistic Manifestation (Kyunghee Korea-Japan workshop on linguistics and language processing). Kyoto, Japan, December 2010.

Scoping in Relation to Base Order in Japanese and Korean. With Shin-Sook Kim. Linguistics Association of Great Britain, University of Leeds, September 2010.

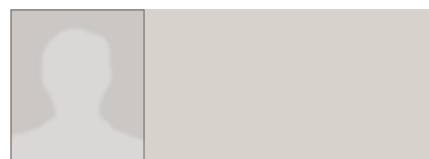
Publications

Verb Semantics and Argument Realization in Pre-Modern Japanese: A Preliminary study of Compound Verbs in Old Japanese. Bjarke Frellesvig, Stephen Horn, Kerri Russell and Peter Sells. 2010. *Gengo Kenkyuu* 138, 25-65.



Isolde STANDISH

Isolde Standish's most recent publication 'Politics, Porn and Protest: Japanese Avant-Garde Cinema in the 1960s and 1970s' reconsiders the question of dissent in the cultural landscape of Japan in the post-war period.



Akiko YANO

Akiko Yano gave a paper titled 'Worship, Legend and Humour in Medieval Japan: The Background for "The Phallic Contest (yōbutsu kurabe)" Handscrolls' in one of the project's workshops at SOAS in May 2011.

She also translated a book authored by Dr Rosina Buckland into Japanese, *Daiei Hakubutsukan Shozō Shunga* (Heibonsha, 2010).

Publications

Her most recent publication is the article 'Capturing the Body: Ryūkōsai's Notes on "Realism" in Representing Actors on Stage' in Keller Kimbrough and Satoko Shimazaki, eds., *Publishing the Stage: Print and Performance in Early Modern Japan* (Boulder: University of Colorado Center for Asian Studies, 2011).



Guests of Meiji Jingu Autumn 2010

ANGUS LOCKYER, JRC CENTRE CHAIR

For the last three years, the JRC has benefitted enormously from the generosity of Meiji Jingu, one of the most important Shinto shrines in Japan, located in an extraordinary forest on the west of Tokyo. Meiji Jingu has generously provided funding for postgraduate studentships, small grants and an annual lecture, without which the JRC's activities would be much constrained.

2010 was the 90th anniversary of the enshrinement of the Meiji emperor in the shrine and was marked by a number of ceremonies, in which Professor Paul Webley, the Director of SOAS, was invited to participate, together with myself, and Craig Pollard, Head of Development. The visit to Meiji Jingu also provided the opportunity to sign the renewal of the agreement between the School and the shrine, ensuring the latter's continued support for another three years.

1 November began with a ritual in the main shrine building, followed by a celebration in the main hall, in front of an audience of some

1,000 people, which incorporated a film narrating the links between Meiji Jingu and SOAS, an address by Professor Webley (in full academic regalia) and a short speech by Dr Emma Cook, a recipient of one of the Meiji Jingu studentships.

In his address, Professor Webley underlined the School's gratitude to Meiji Jingu and emphasized how both institutions were linked by their common determination 'to foster links across national borders, to develop a real understanding of what it is to be human, to encourage the informed study of the world in which we live and, above all, to support the new generation of young people who will continue our work'.



"The celebrations of the 90th Anniversary of the Enshrinement of Meiji Jingu were magnificent"

Warren (also a SOAS alumnus). It was a very jolly occasion, and as well as lots of alumni, there were also a number of distinguished guests, including Sir Graham Fry (a previous British Ambassador to Japan and now a member of the SOAS Governing Body). The SOAS Alumni in Japan (SAIJ for short) is one of the most active alumni groups we have –

In the afternoon, I chaired a public symposium on 'Meiji Japan as seen from home and abroad', with keynote addresses from Hirakawa Suehiro of Tokyo University on spirits and Yoshida Kenji of the National Museum of Ethnology on museums and exhibitions, followed by a panel discussion including Inaga Shigemi and John Breen, both of the International Research Centre for Japanese Studies, and Princess Akiko of Mikasa, of Ritsumeikan University.

In addition to the events at Meiji Jingu, the week also provided an opportunity to visit a number of partners, colleagues and friends, not least the SOAS Alumni in Japan, who held a reception at the British Embassy in Tokyo, with speeches from Professor Webley and Sir Graham Fry, a former Ambassador to Japan and a member of the SOAS Governing Body.

As with the ceremonies at Meiji Jingu, the evening provided a vivid reminder of the extent to which SOAS both feeds and thrives on its links with the world. We are grateful to all our friends in Japan for a wonderful week and their continued support.

PAUL WEBLEY, SOAS DIRECTOR & PRINCIPAL

Last autumn, Angus Lockyer (Head of the Japan Research Centre), Craig Pollard (Head of Development and Alumni relations) and I spent a fascinating and productive week in Japan as guests of Meiji Jingu.

The celebrations of the 90th Anniversary of the Enshrinement of Meiji Jingu were magnificent, and as well as ritual events that were moving and beautiful, there was an academic celebration and a brilliant symposium in the afternoon, chaired by Angus, and with contribution from (among others) Princess Akiko and John Breen.

My experience of the ritual made me want to find out more and John was kind enough to send me a copy of his book (co-authored with Mark Teeuwen) 'A New History of Shinto'. I have read this with great pleasure – it is a very accessible guide to the development of Shinto, and strongly recommended.

The next highlight of our trip was the Alumni reception, this year held in the British Embassy courtesy of His Excellency David

those who are interested in their activities might like to look at their facebook page: www.facebook.com/SOAS.alumni.japan

Then it was off to Kyoto on the bullet train, for meetings with Osaka University and Ritsumeikan University, followed by a visit to Agon Shu. Agon Shu generously fund a lectureship in Buddhist Studies at SOAS and the visit to their temple was fascinating. In the evening, we had an unforgettable dinner hosted by his Holiness Kiriya Kancho complete with Geishas and Maikos. For Craig (on his first visit to Japan) and I, this was an extra-ordinary cultural experience – Angus appeared to take it all (particularly the games) in his stride.

After a side trip to Kobe University (where Angus gave us the low down on the development of golf in Japan and I gave an academic talk, for a change), it was back to Tokyo for a final visit (to the Sasakawa Foundation). Here we had a great final evening (more eating and drinking, this time with Kenta Kuribayashi and his wife, to commemorate his stepping down from the Chairmanship of SAIJ).

Academic Events September 2010 - August 2011

SEMINAR SERIES

11 September 2010

Anime, manga and virtual worlds:
a conversation on the state of the field

Angus Lockyer (SOAS)

Ueno Toshiya (Wako University)

13 October 2010

Those restless little boats: on the uneasiness
of Japanese power boat gamblers

Tom Gill (Meiji Gakuin University)

27 October 2010

Revisiting Paradise: Buddhist Painting in
Modern Japan

John Szostak (University of Hawaii /
Sainsbury Institute)

17 November 2010

Analysing the Outrageous: Takehara Shunchô-
sai's Shunga Book, 'Pillow Book for the Young'

Professor Andrew Gerstle (SOAS)

24 November 2010

Building up steam as consumers: women,
rice-cookers and the consumption of
everyday household goods in Japan

Dr Helen MacNaughtan (SOAS)

1 December 2010

Unfinished Fascist: Ôkawa Shumei
and the Film Never Made

Jonathan M Hall (Pomona College)

8 December 2010

The Making of "Child Soldiers"
in Japan and Elsewhere

Sabine Fruhstuck (International Research
Center for Cultural Studies, Vienna)

15 December 2010

Silk Roads, Patchworked Histories: Kaminoseki
and the Making of Modern Japan

Martin Dusinberre (Newcastle University)

26 January 2011

The Secret Iconography of Empowerment:
Triads and Other Ritual Bodies from
Mediaeval Japanese material

Lucia Dolce (SOAS)

9 February 2011

From miniature to monumental: exhibiting
dogu and haniwa from Gowland to Gormley

Simon Kaner (SISJAC)

23 February 2011

Art and Design in Asia

Professor Haruhiko Fujita (Osaka University)

2 March 2011

Esoteric uses of the I-ching in
medieval Soto Zen

Kigen-san Licha (SOAS, Tsuda Bursary
recipient 2010-2011)

9 March 2011

State Capacity and Reproductive
Freedom in Imperial Japan

Fabian Drixler (Yale)

16 March 2011

Discrimination after the Dowa Projects

Ian Neary (Oxford)

23 March 2011

Sacred Landscape under the Moonlight:
Kasuga & Kumano Mandara from
the Nezu Collection

Yukiko Shirahara (Nezu)

4 May 2011

Recording Daily Life: Illustrated
'Genre Books' in Japan, 1795-1835

Ellis Tinios (Leeds)

1 June 2011

“夏目漱石と日露戦争” [How did Natsume
Soseki respond to the Russo-Japanese War?]

Kengo Fujio (Daito Bunka University)

Stylometry in Japanese Language

Mingzhe Jin (Doshisha University)

20 June 2011

Midwife and Manga Heroine: Oine Siebold,
Nagasaki and the Birth of Modern Japan

Ulrich Heinze (Sasakawa Lecturer in Japanese
Visual Media, SISJAC, University of East Anglia)

EVENTS

9-10 September 2010

Triennial Conference

British Association For Japanese Studies
(BAJS)

13-14 September 2010

Workshop

Shunga in its Social and Cultural Context

20 September 2010

JRC & Japan Society Book Launch

Personalities: Britain and Japan

6 October 2010

Meiji Jingu Autumn Lecture

Crafting a new warrior for a new age:

Yamaga Soko and the Way of the Samurai

Richard Bowring (University of Cambridge)

5 November 2010

SISJAC Toshiba Lecture in Japanese Art

Some Peacocks, A Parrot, and the

Heian World in Global Perspective

Mimi Hall Yiengpruksawan (Yale University)

10 November 2010

SISJAC Toshiba Lecture in Japanese Art

Two Supernovae and the Buddhist Astronomi-
cal Imagination in Japan of the 11th Century

Mimi Hall Yiengpruksawan (Yale University)

11 and 12 November 2010

Workshop

Mirror of an Uncertain Age: Revisiting Postwar
Japan at the Dawn of the Post-Industrial Era

12 November 2010

Zipangu Fest

Putting the 'I' in Independent Filmmaking:
An Introduction to 'Jishu Eiga' followed
by a screening of Tetsuaki Matsue's
Annyong Kimchee (1999)

Jasper Sharp (Producer, Director)

24 November 2010

Zipangu Fest

Voices from Japanese Independent
Cinema: Tetsuaki Matsue in Conversation
Tetsuaki Matsue in conv with Jasper Sharp

18 April 2011

JRC & Japan Society Lecture

Art Historicism' & Contemporary Japanese Art

John Szostak (University of Hawaii at Manoa)

Robert and Lisa Sainsbury Fellow 2010-2011)

26 April 2011

The Annual Tsuda Lecture 2011

The Afterlife of a Material Object:

The Gold Seal (金印) of 57 C.E.

Professor Joshua Fogel (York University, Toronto)

16 May 2011

JRC & Japan Society Lecture

After the Shock: Prospects for Recovery
and Reconstruction in Post-quake Japan

20 and 21 May 2011

Workshop

Shunga - erotic art in a comparative context

17-23 July 2010

JRC & Japan Society Lecture

SOAS Translation Workshop in
Japanese Studies

18 July 2011

JRC & Japan Society, Carmen Blacker Lecture

'Initiatic landscape' and

Shugendo's mountain-entry

Anne Bouchy

15 August 2011

JRC & Japan Society Lecture

Japanese Enamels: The Seven Treasures

Gregory Irvine

16 August 2011

JRC & Japan Society Lecture

Double Victim of the Atomic Bomb.

Testament of Yamaguchi Tsutomu

Hidetaka Inazuka (Film Producer)

BAJS Triennial Conference



Conference participant on the steps of SOAS main entrance

BRITISH ASSOCIATION OF JAPANESE STUDIES 9 - 10 SEPTEMBER 2010

The British Association for Japanese Studies (BAJS) is a UK-based association of scholars and researchers dedicated to the development of Japanese Studies. Our aim is to promote teaching and research on Japan by coordinating events such as academic conferences and circulating information about the field.

The JRC was honoured to host the triennial conference of the British Association of Japanese Studies (BAJS) on 9 and 10 September, 2010. BAJS, formed in 1974, recently decided to hold its major conference on a triennial basis, alternating with the European Association for Japanese Studies and the Joint East Asian Studies Conferences, with smaller events during the other two years. The SOAS conference was the first such triennial event and proved to be a great success, attracting some 200 participants from the UK, Europe, Asia and beyond for two full days of lectures, panels and discussions about all aspects of Japanese Studies.

Two highlights of the conference were a plenary lecture by Ueno Toshiya, a leading scholar of media theory and cultural studies, who discussed various earlier manifestations

of the impersonal agency evident in new online communities, and the Japan Forum Toshiba prize lecture by Aurelia George Mulgan, a professor at the University of New South Wales, on Ozawa Ichirō. Since Professor Mulgan could not be present in person, she participated through video link to Australia, with a number of participants subsequently commenting that the virtual extension of the conference added quite a bit to the proceedings.

These were only two of numerous attractions, however, with panels on subjects covering the full range of Japanese studies, from business to Buddhism, linguistics to international relations, and shunga to the history of the violin. Current issues in Japanese politics and society, such as the new DPJ government, higher education reform, and the declining countryside prompted extensive debates, but no less did sessions on classical Buddhism, medieval literature and prewar history. The conference as a whole testified to the vibrancy of the field of Japanese Studies and the value of building on our links with colleagues in Europe and further afield.

The conference also incorporated the

Association's Annual General Meeting, which saw the Presidency pass from Mark Williams of Leeds University to Chris Hughes of Warwick, as well as a reception and dinner, which was addressed by Paul Webley, the Director of SOAS. Professors Williams, Hughes and Webley all underlined the commitment of the Association and School to Japanese Studies, at a time when higher education both in the UK and globally are facing new constraints.

The Centre, School and the Association are grateful to the Daiwa Anglo-Japanese Foundation, the Toshiba International Foundation, the Japan Foundation, and the Great Britain Sasakawa Foundation, all of whom have long been supporters of Japanese studies in the UK and without whose support the conference would not have been possible. We are looking forward to its next incarnation in 2013 in Nottingham.

Angus Lockyer



Meiji Jingu Autumn Lecture

RICHARD BOWRING CRAFTING A NEW WARRIOR FOR A NEW AGE: YAMAGA SOKO AND THE WAY OF THE SAMURAI

6 OCTOBER 2010

This year's activities got off to a wonderful start with the Meiji Jingu Autumn Lecture, on 6 October, delivered by Richard Bowring, an old friend of SOAS, who is Professor of Japanese Studies at the University of Cambridge and Master of Selwyn College. Professor Bowring's work ranges across the whole span of Japanese history, with books on both Mori Ōgai and Murasaki Shikibu.

His lecture however drew on his current project, a successor volume to his recently published *The Religious Traditions of Japan, 500-1600*, which will explore the development of Japanese thought during the early modern period. Professor Bowring chose to focus his talk on Yamaga Sokō, a key figure at the end of the 17th century in the emerging discussion on what it meant to be a samurai.

The lecture began by noting that as a term bushido (the 'way of the samurai') was unknown until the 20th century, but that its formulation was inspired by a number of 17th century texts. This was a period when Buddhist influence was waning in institutional terms, but predominant in spiritual terms. In order to critique this influence, a number of scholars turned to Sung Confucianism, including most famously Hayashi Razan.

Yamaga studied with Razan as a child, but gradually broke away from his teacher's attachment to Neo-Confucian thought (and so in the process becoming a target for arrest and exile). Neo-Confucianism, he said, was premised on the idea that virtue was innate and that a quasi-Buddhist passivity was sufficient to ensure harmony. Yamaga insisted instead that virtue had to be studied and practised.

The problem that Yamaga sought to address



From left: Angus Lockyer, Richard Bowring and Andrew Gerstle

thereby was how to transform a warrior's vision of himself during a time of peace. Yamaga's answer was to try to join together the traditional rhetoric of the samurai and the contingent circumstances in which they found themselves, to produce a discipline he identified as *shidō*. The martial values with which they were familiar could also be civil values, he argued. It was possible to rule both by the sword and by example.

Yamaga's ideas had a mixed history. During his own life, they were seen as a threat and caused him to be sent into exile. Soon after his death, they were identified as one of the inspirations for the revenge of the 47 ronin. And for the remainder of the Tokugawa period, they had little influence. It was only in the mid-19th century that Yamaga was rediscovered, notably by Yoshida Shōin, and his *shidō* gradually became transformed into modern bushidō.

Angus Lockyer



Zipangufest

PUTTING THE 'I' IN INDEPENDENT FILMMAKING: AN INTRODUCTION TO 'JISHU EIGA' FOLLOWED BY A SCREENING OF TETSUAKI MATSUE'S ANYYONG KIMCHEE (1999)
JASPER SHARP
 (PRODUCER, DIRECTOR)

12 NOVEMBER 2010

The first UK-wide festival devoted to Japanese film, Zipangu Fest's goal is to introduce works, both new and old, previously unseen by mainstream UK film audiences, to demonstrate the many identities of Japan as depicted by some of the country's most exciting and revered talents.

The first edition was held during the last week of November 2010 in several venues across London, with an inaugural Halloween special night at the Barbican and with parts of the line-up eventually brought to Leeds, Coventry and Bristol.

The programme was mainly curated by Jasper Sharp, an established writer and film critic specialising in Japanese cinema who has programmed a large number of high profile seasons and retrospectives around the world, the Japanese strand of Raindance Film Festival in London (2005-2009) and who works as an advisor on the Japan Foundation UK's touring programme since 2005.

The core organising team of the festival included two curators; two general operations and another two (SOAS postgraduate students) covering student liaison and volunteer coordinator. During the festival the team grew with 12 festival assistants mainly from SOAS' student community, including a dedicated film crew and a photographer.

FOR MORE INFO ON ZIPANGU FEST VISIT:
www.zipangufest.com



VOICES FROM JAPANESE INDEPENDENT CINEMA: TETSUAKI MATSUE IN CONVERSATION
TETSUAKI MATSUE IN CONVERSATION WITH JASPER SHARP

24 NOVEMBER 2010

SOAS AND ZIPANGUFEST

SOAS became an important collaborator of Zipangu Fest first's years edition, not only as an active sponsor through the Alumni & Friends Fund but also as a host venue thanks to the JRC support.

The first event organised during the previous week of the festival was a lecture at the Brunei Gallery Theatre by Jasper Sharp about the Japanese Independent Filmmaking and the importance of "self-made" films (*jishu eiga*). The lecture explored the history of this most vibrant of independent filmmaking subcultures looking at representative works such as Naomi Kawase, Kenji Murakami and the most recent work of Matsue Tetsuaki. The talk was followed by the screening of Matsue's *Annyong Kimchee* (1999), an investigation into the importance of ethnic and cultural roots and what it means to be Japanese.

During the festival at Vernon Square the student community had the opportunity to meet Matsue and watch on premiere *The Virgin Wildsides*. The director was in conversation with Zipangu's main programmer, Jasper Sharp talking about Japanese Independent filmmaking culture and presenting his two most recent titles: *Annyong Yumika* (2009), a documentary portrait of the adult performer Yumika Hayashi, and *Live Tape* (2009), the one guitar, one camera, one tape and one take live concert film of Kenta Maeno's street performance.

Almudena Escobar López
 Zipangufest's volunteer coordinator
 & venues liaison



Japan Society Lectures

Building on previous collaborations, the Japan Society partnered with the SOAS Japan Research Centre to present a series of monthly lectures beginning in Spring 2011.

Reflecting London's status as an international centre for scholarship on Japan, the JRC and Japan Society have welcomed a diverse group of researchers based in the UK as well as visiting scholars from abroad. The lecture series aims to present the most recent and topical scholarship from all disciplines to its membership and a general public audience as part of the Japan Society's objective to promote learning and advance education in regards to Japan.

As part of a joint response to the Great East Japan Earthquake, the Japan Society co-organized with JRC member Dr Christopher Gerteis, a moderated discussion in support of the Japan Society Tohoku Earthquake Relief Fund. The panel, which comprised

specialists from a range of backgrounds, focused on the need for long term recovery and reconstruction aid to the northeastern rural communities most affected by the earthquake, tsunami and nuclear crisis. Roundtable members included a geo-physicist with expertise in earthquake mitigation, an NPO director working with community and voluntary organisations in Japan, a nuclear industry analyst, and an historian whose research examines rural life in Japan and community relationships with the nuclear industry.

The Japan Society is grateful to the Japan Research Centre for its support. We would like to extend a special thanks to Chair Dr Angus Lockyer and staff members Jane Savory and Rahima Begum.

Jennifer Anderson
Japan Society



THE
JAPAN
SOCIETY

The Japan Society is the leading body in the United Kingdom dedicated to the enhancement of the British-Japanese relationship. With a history stretching back to 1891, its members are committed to promoting deep and lasting understanding between our two countries.



Annual Tsuda Lecture



JOSHUA FOGEL THE AFTERLIFE OF A MATERIAL OBJECT: THE GOLD SEAL (金印) OF 57 C.E.

26 APRIL 2011



This year's Tsuda Lecture was delivered by Professor Joshua Fogel of York University in Toronto. Born in Brooklyn, raised in Berkeley, with a BA from the University of Chicago, an MA and PhD from Columbia University, and graduate student study at Kyoto University (1976-87), Professor Fogel has since taught at Harvard University (1981-88) and the University of California, Santa Barbara (1989-2005), with visiting stints at the Institute for Advanced Study in Princeton (2001-03), Kyoto University (1996-97), British Inter-University China Centre (2007), and Kansai University (2008). Trained initially in Chinese history, he developed an abiding interest in Japanese history, too, and after many years of language study, found a way to integrate the two: the study of Sino-Japanese relations.

Professor Fogel's first major project was a biographical study of Japan premier prewar Sinologist, Naito Konan, which appeared in 1984 as *Politics and Sinology: The Case*

of Naito Konan (1866-1934). Subsequent work has tended to focus on the dynamic interaction between these two cultural spheres. His sixth single-author book, *Articulating the Sinosphere: Place and Time in Sino-Japanese Relations*, was published by Harvard University Press in spring 2009. He has also published 17 edited volumes and 14 volumes of translation, with three more in press. For 15 years, he served as editor-in-chief of *Sino-Japanese Studies* (1989-2004), which was revived as an online journal in 2009 and for which he now serves as editor again.

Professor Fogel's lecture explored the ways in which an 18th century discovery has been used over the last two and more centuries. According to the standard Chinese history of the Later Han Dynasty, in the year 57 C.E. an emissary from somewhere in the land that is now called Japan appeared at the court of the Later Han in Luoyang and was awarded

a seal and ribbon by the emperor, indicating investiture in the Han ritual system. That gold seal promptly disappeared from history for over seventeen centuries. It was discovered in 1784 by a farmer beneath his rice paddy in Kyushu when he was repairing an irrigation ditch. He turned it over to the local magistrate who summoned a local Confucian scholar who took one look at the inscription and knew immediately that this was none other than the seal mentioned in the Later Han history. Over the following two-plus centuries, over 350 books and articles have been written directly or indirectly about every conceivable aspect of the gold seal—what state the emissary represented, how the gold seal ended up where it was found, the meaning of the inscription, what the snake-shaped handle means, and much more. The debate continues to this day, as evident in the lively discussion that followed Professor Fogel's lecture.

Angus Lockyer

22 AUGUST 2011

Tenri University Delegation to SOAS

Left to right

Nick Butler, Head of Student Recruitment

Professor Drew Gerstle, Head of Japan and Korea Department

Reverend President Masahiko Ihuri, Tenri University

Professor Paul Webley, Director & Principal

Professor Toshihiro Yoshikawa, Dean, Faculty of International Studies, Tenri University

Mr Takeuchi Nobuyuki, Secretary and Director of Tenrikyo UK centre

Mr Takayuki Onoue, Head of Tenrikyo UK centre





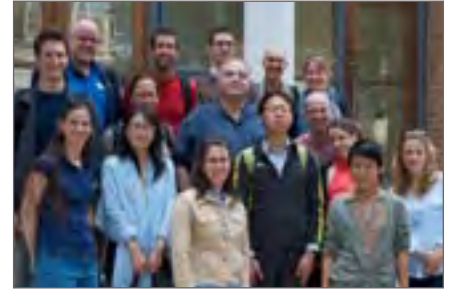
Translation Workshop

SOAS TRANSLATION WORKSHOP IN JAPANESE STUDIES

17-23 JULY 2011

In July 2011 the JRC held the second year of a training event for students to engage in an intensive process of critiquing and revising their English translation of an assigned Japanese-language scholarly article. The workshop, sponsored by the Nippon Foundation, ran for four days and brought 16 selected post-graduate students from UK and overseas to SOAS.

The programme was taught by 6 specialists: 2 from overseas universities Professor Timothy George (University of Rhode Island) and Professor Paul Midford (Norwegian University of Science and Technology) and 4 from SOAS. The workshop was headed by Dr Chris Gerteis and Dr Angus Lockyer.



The goal of the workshop was to aide participants in developing advanced skills particular to translating scholarly work. This was achieved through the process of producing a translated academic article from first draft to final publication.

The workshop included activities of one-on-one sessions between students and faculty members, roundtable discussions of general difficulties in translation and small group discussions based on topics ranging from broad disciplinary distinctions, to particular translations.

The participants enjoyed a group outing visiting St Paul's Cathedral and other famous London landmarks.

Jane Savory



Shunga

EROTIC ART INTERNATIONAL RESEARCH PROJECT REPORT

In May 2009 Andrew Gerstle of SOAS and Timothy Clark of the British Museum, together with Monta Hayakawa of the International Research Centre for Japanese Studies, Kyoto, and Ryo Akama of Ritsumeikan University began a three-year research project on Japanese erotic art, 'Shunga', funded by the Leverhulme Trust. Below is a report on the second year of this project.

Ryoko Matsuba (August 2010 to March 2011) and Aki Ishigami (April 2011 to March 2012) joined the project as Research Fellows attached to the British Museum.

The project is based on the hypothesis that *shunga* books, paintings and prints are important sources of Japanese history, literature and art, and that research on shunga helps us understand Japanese society better. This past year the project hosted two workshops at SOAS, one 'Shunga in its social and cultural context' in September 2010 (details at <http://www.soas.ac.uk/jrc/events/13sep2010-workshop-shunga-in-its-social-and-cultural-context.html>) and the second 'Shunga - erotic art in a comparative context' in May 2011 (details available at <http://www.soas.ac.uk/jrc/events/20may2011-shunga--erotic-art-in-a-comparative-context.html>). We also had a panel of five presentations at the British Association of Japanese Studies, held at SOAS on 9-10 September 2010. During the final year of the project we plan to hold one more workshop/conference and prepare papers for publication. One aim will be to analyse shunga in a comparative context.

Rosina Buckland, a member of the group and now Curator of Japanese Art at the National Museum of Scotland published *Shunga: Erotic Art of Japan*, British Museum Press, November 2010. A Japanese version was published at the same time by Heibonsha as 『春画 Erotic Art in Japan - 大英博物館所蔵』, translated by Akiko Yano, also a member of the project. Andrew Gerstle published a book in Japanese in March 2011, 『江戸をんなの春画本—艶と笑の夫婦指南』, also published by Heibonsha. This book examines four shunga books that were parodies of practical textbooks

and conduct books aimed at women and men. Professor Hayakawa published several books on shunga including 『現代語訳・春画』 新人物往来社. Amaury Garcia has published a book on shunga in Spanish, reaching out to a new market: *El control de la estampa erótica japonesa shunga, El Colegio de México, México, D.F., 2011*. Ricard Bru and others have published in English, *Secret Images: Picasso and the Japanese Erotic Print*, Thames and Hudson, based on the Spanish catalogue for the exhibition at the Picasso Museum in Barcelona. Aki Ishigami continued to publish articles on shunga, such as 'Poetry and Palimpsest in Suzuki Harunobu's Eight Modern Views of Interiors (Furyu Zashiki Hakkei),' in *Andon* No. 90, June 2011, pp. 5-17, and 'Chushingura mono no ehon (Erotic Editions of Chushingura [The Forty-seven Loyal Retainers]),' in *Art Research*, No. 11, March 2011, pp. 17-36.

This past year the group was able to continue surveying private collections in Japan and the US, and to examine a previously unknown collection in Denmark. As part of our activities, Aki Ishigami is adding information on these collections to her database on shunga books, which is open access. The site is on the Ritsumeikan Art Research Center website: <http://www.dh-jac.net/db13/ehoncatalogue/FMPro?-db=ehoncatalogue.fp5&-lay=layout2&-format=index.html&-view> It has been exciting to discover unrecorded

books, prints and paintings in these collections.

During the last half year the project has been focused on the planning for the exhibition on shunga to be held at the British Museum in 2013. We have now an outline of the themes, questions and works to be included. The next stage will be to write the catalogue essays and entries.

Our research activities and the efforts to put on a shunga exhibition in London and have it also travel to Japan, have shown us that the 'taboo' in Japanese society against shunga is still very powerfully active. There are many individuals in Japan, it seems, especially in positions of authority, who do not wish to see shunga acknowledged as part of Japan's cultural heritage. The research work of the many individuals in the project, however, has shown that shunga was an integral element of the culture/society of all classes of Japanese society across the land until the early 20th century.

We hope that the publications and exhibition on shunga will help to change this 'taboo' view, and to encourage more scholars to study aspects of shunga within the context of related non-shunga art and literature.

Andrew Gerstle



HONORARY APPOINTMENTS Sep 2010 - Aug 2011

PROFESSORIAL RESEARCH ASSOCIATES

Professor Gina BARNES

PHD(MICHIGAN)
22 May 1996 - 31 August 2012

Professor Neil JACKSON

MA(COURTAULD INSTITUTE)
PHD(SOUTH BANK)
23 June 2009 - 31 August 2012

Professor Peter KORNICKI

MA MSC PHD(OXON)
1 November 2007 - 31 August 2011

Professor Ian NISH

MA PHD(LONDON)
28 April 2010 - 31 August 2011

Professor Evgeny STEINER

BA MA(MOSCOW STATE) PHD(USSR ACADEMY OF
SCIENCES, MOSCOW)
9 June 2008 - 31 August 2012

Professor Yuriko TAKAHASHI

BA(KEIO) MA(OCHANOMIZU)
1 April 2007 - 31 August 2012

RESEARCH ASSOCIATES

Dr Penelope FRANCKS

MSC PHD(LONDON)
1 September 2003 - 31 August 2012

Dr Christine GUTH

PHD(HARVARD)
25 January 2008 - 31 August 2011

Dr Monika HINKEL

MA BA PHD(BONN)
4 June 2010 - 31 August 2011

Dr David W HUGHES

MA(CANTAB) MPHIL(YALE) PHD(MICHIGAN)
28 August 2008 - 31 August 2012

Dr Olga KHOMENKO

BA(KIEV STATE) PHD MA(TOKYO)
4 December 2009 - 31 August 2011

Dr Barak KUSHNER

BA(BRANDEIS) PHD(PRINCETON)
19 January 2010 - 31 August 2011

Dr Nicola LISCUTIN

MA(HAMBURG) PHD(CANTAB)
5 March 2004 - 31 August 2012

Dr Jonathan MACKINTOSH

BA(LETHBRIDGE) MA(SOAS) PHD(CANTAB)
1 November 2007 - 31 August 2011

Princess Akiko MIKASA

BA(GAKUSHUIN)
17 February 2011 - 31 August 2012

Ms Mami MIZUTORI

BA(HITOTSUBASHI)
9 April 2010 - 31 August 2011

Dr Rajyashree PANDEY

MA(WASHINGTON)
PHD(AUSTRALIAN NATIONAL)
1 July 2007 - 31 August 2012

Dr Maria ROMÁN NAVARRO

BA MA(VIENNA) PHD(HEIDELBERG)
8 February 2006 - 31 August 2011

Dr Lone TAKEUCHI

BA(COPENHAGEN) MA(BERKELEY)
PHIL(COPENHAGEN)
18 September 2007 - 31 August 2011

Dr Sarah TEASLEY

BA(PRINCETON) MA(MUSASHINO ART)
PHD(TOKYO)
1 February 2009 - 31 August 2012

Dr Ellis TINIOS

PHD(MICHIGAN)
23 January 2002 - 31 August 2012

Dr Stephen TURNBULL

BA(CANTAB) MA PHD(LEEDS)
1 March 2011 - 31 August 2012

Dr Akiko YANO

MA PHD(KEIO)
24 May 2007 - 31 August 2012

VISITING SCHOLARS

Professor David BURLEIGH

MPHIL(UNIVERSITY OF SUSSEX)
BSC(UNIVERSITY OF ULSTER)
1 April 2010 - 31 March 2011

Professor Kengo FUJIO

BA MA(WASEDA)
1 April 2011 - 31 March 2012

Dr Misa Okumura HIRASHIMA

PHD MA BA(SOPHIA UNIVERSITY)
1 April 2010 - 31 March 2011

Professor Guanglin JIN

PHD MA(UNIVERSITY OF TOKYO)
BA(NORTHEAST NORMAL UNIVERSITY)
1 June 2011 - 31 August 2011

Professor Mingzhe JIN

BA(NORTHEAST NORMAL UNIVERSITY)
PHD(INSTITUTE OF STATISTICAL MATHEMATICS)
1 April 2011 - 30 September 2011

Professor Iwao MAIDA

MA(KANAGAWA UNIVERSITY) MA(HOKKAIDO
UNIVERSITY) MA(UNIVERSITY OF TOKYO)
1 April 2010 - 31 March 2011

Ms Chika MUROTA

MA BA(UNIVERSITY OF TOKYO)
1 April 2010 - 31 March 2011

Ms Kazue NAKAMURA

BA(TOKYO) BA(OCHANOMIZU)
15 June 2011 - 15 March 2012

Dr Mikio YOSHIDA

MA BA(UNIVERSITY OF TOKYO)
1 April 2010 - 31 March 2011

POST DOCTORAL RESEARCH ASSOCIATE

Dr Shino ARISAWA

PHD MMUS(SOAS) BA(TOKYO UNIVERSITY
OF FOREIGN STUDENTS)
10 November 2008 - 10 November 2010

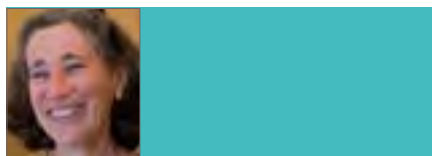
JRC VISITOR

Dr Nahoko ARAI

BA(MIYAGI GAKUIN) PHD(YAMAGATA)
1 March 2011 - 1 April 2011

An up-to-date list of honorary appointments is available on the JRC web page: www.soas.ac.uk/jrc/members/

HONORARY APPOINTMENTS



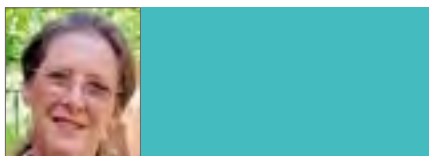
Christine GUTH

Research Associate

In July 2010, Christine gave a keynote talk on “Intoxication and Otherness in Japanese Visual Culture” at the conference at Christ’s College, Cambridge on “Intoxicants and Intoxication in Cultural and Historical perspectives” co-organized by her colleague at the V&A, Angela McShane. She began the 2010-2011 academic year by presenting a paper on masterpiece merchandise at the Museums and Galleries History Group conference at the University of Leeds.

In October she travelled to Krakow to participate in the conference “Art of Japan, Japonisms, and Polish-Japanese Art Relations” held at the Manggha Museum where she spoke about the political implications of Yokoo Tadanori’s mobilization of Hokusai’s great wave in the early 1960s. In the spring term she spoke on other aspects of her ongoing research on the social life of “The Great Wave” at the Nissan Institute at Oxford University, in the Art History Department at Cambridge University, and at the conference “Americanists Abroad” held at the Courtauld Institute.

In February, she gave a paper in the anthropology department at University College, London based on a forthcoming article entitled “Layering: Materiality, Touch, and Time in Japanese Lacquer.” Her article “Import Substitution, Innovation and the Tea Ceremony in Fifteenth and Sixteenth-century Japan” appeared in *Global Design History*, a publication edited by colleagues Sarah Teasley and Glenn Adamson published in 2011 by Routledge.



Gina BARNES

Professorial Research Associate

Talks

2011 Invited Paper “Vulnerable Japan: the volcanic setting of life in the archipelago.” Conference on Environmental History in Japan, 28-29 March 2011, Honolulu

2011 Opening Comments and Moderator for panel on European Studies in Europe. Yonsei-Yeongwol Forum, 22-26 May 2011, Yeongwol, Korea

2011 Invited Paper, “State Formation in the Three Kingdoms.” Yonsei-Yeongwol Forum, 22-26 May 2011, Yeongwol, Korea

Publications

2010 “Earthquake archaeology in Japan: an overview.” In Sintubin, M.; Stewart, I.S.; Niemi, T.M.; and Altunel, E., eds. *Ancient Earthquakes*. Geological Society of America Special Paper 471, p. 81-96, doi: 10.1130/2010.2471(08).

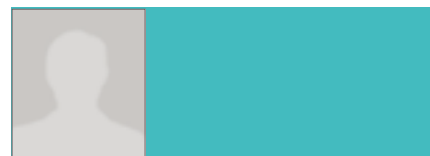
2010 “Landscape and subsistence in Japanese history.” Pp. 321-340 in *Landscapes and societies: selected cases*, ed. by P. Martini and W. Chesworth. Dordrecht: Springer.

2011 “古墳時代前期における統治支配権仮説 [A hypothesis of rulership authority in the Early Kofun period].” *古代学研究* 190: 1-14, 2010.

Book Reviews

2011 *Early Korea 1: Reconsidering Early Korean History through Archaeology*, edited by Mark E. Byington. *International Journal of Asian Studies* 8.1: 108-11.

2011 *Early Korea 2: The Samhan Period in Korean History*, edited by Mark E. Byington. *International Journal of Asian Studies* 8.2: 225-226.



Peter KORNICKI

Professorial Research Associate

Publications

2010 *The female as subject: Women and the book in Japan*, edited with Mara Patessio and Gaye Rowley (Ann Arbor: Center for Japanese Studies, University of Michigan), pp. x + 279.

2010 *Catalogue of the Japanese coin collection (pre-Meiji) in the British Museum*, compiled with Shin’ichi Sakuraki and Helen Wang (London: British Museum Publications), pp. vi + 218

2011 *Catalogue of pre-modern Japanese maps held in the British Library* (published as a pdf on the British Library website), pp. vii + 110

2010 ‘A note on Sino-Japanese: a question of terminology’, *Sino-Japanese Studies* 17: 1-17

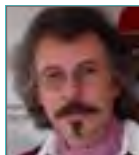
2010 *European interest in Japanese coins before 1853*, in *Catalogue of the Japanese coin collection (pre-Meiji) in the British Museum*, compiled with Shin’ichi Sakuraki and Helen Wang (London: British Museum Publications), pp. 27-32.

2010 ‘Nữ tiểu học và các sách nữ huấn của Việt Nam – dưới góc nhìn của thư chí học so sánh’, with Nguyen Thi Oanh, *Tạp chí Hán nôm* 103: 23-36

2010 ‘European interest in Japanese coins before 1853’, in *Catalogue of the Japanese coin collection (pre-Meiji) in the British Museum*, edited with Shin’ichi Sakuraki and Helen Wang (London: British Museum Publications), pp. 27-32.

2011 ‘A transnational approach to East Asian book history’, in Swapan Chakravorty and Abhijit Gupta, eds, *New word order: transnational themes in book history* (Delhi: Worldview), pp. 65-79.

HONORARY APPOINTMENTS



Evgeny STEINER

Professorial Research Associate

In 2010-11 Evgeny's main project was Hokusai Manga – researching its compositional structure and writing full, page by page, commentaries for the complete edition of Manga's 15 volumes. For this project the Japan Foundation awarded Evgeny with a publication grant (April 2011). Interim results have been published in a number of essays and papers: "Manga-manga" // *Zerkalo* (International Journal of Art & Literature, Tel-Aviv), #35, 2010, pp. 124-162; "Hokusai Manga: The Principles of the Composition", a paper at the Conference "History & Culture of Japan", Russian State University for the Humanities, Moscow, Feb., 13, 2011; "Hokusai Manga: Reconstructing the Composition", a paper at the 13th EAJIS Conference, Tallinn, August 24-27, 2011; "Manga: the Global Phenomenon with East-West-East Roots," a paper at the Conference "The Inspiration by the Old Art in the Art of 20-21st cc." Torun Univ., Poland, December 1-3, 2011.

During 2009-10 Evgeny envisioned, organised and chaired a big international conference "Orientalism/Occidentalism: The Languages of Culture vs. the Languages of Description" which took place in the Russian Institute for Cultural Research (Moscow), 24-27 September, 2010. Among about 80 participants there were scholars from Europe, USA, Japan, Australia and other countries with Profs Timon Screech and Toshio Watanabe as keynote speakers. On the results of the conference Evgeny published: "Orientalism/Occidentalism:

Languages of Description vs. Languages of Culture', *The Analytical Report*," // *NLO* (New Literary Observer), #109, 2011 (May), pp. 414-422. Currently Evgeny is editing the volume of proceedings with articles based on selected papers.

His other publications include: "The Kitaev Collection of Japanese Art in the Pushkin Museum" // *Impressions*, # 32, 2011, pp. 37-63; "The Aura of Alphabet: The Cyrillic 'Word is Goodness' vs. Japanese 'World of Shallow Dreams'" // *Iskusstvo i Kultura* [Art & Culture] #2 (2), 2011, pp. 7-13.

His Japan-related papers and guest lectures include: "Second Only to Chiossone's: The Kitaev Collection of Japanese Art," a paper at the 21st Conference of European Assoc. of Japanese Recourses Specialists, Genoa, Italy, Sep. 3, 2010; Opening address: Orientalism/Occidentalism: Languages of Culture vs. Languages of Description. International Conference held at the Russian Institute for Cultural Research, Moscow, Sept. 23-25, 2010; "Hidden Dragons, Secret Weapons and Smiling Buddhas: The Lost Museum of the World Art," the Courtauld Institute of Art, London, 29 April 2010.

In the end of May a new book, *Approaching Mt. Fuji*, was published in Moscow (Slovo Publishers, 362 pp.). A book launch party was held at The House of Russian Diaspora (aka Solzhenitsyn House) on 6 June, 2011, where Evgeny delivered a presentation titled



Olga Khomenko

Research Associate

Olga's scientific interests include history of global consumer culture, consumerism and changing trends in XX century consumer behavior. Her research has been focusing on the development of consumer society in post-war Japan and the role of advertising in the process of changing women's identity in Japan.

Olga is presenting her research results at the conference of European Association of Japanese Studies in August, 2011 in Tallinn, call "Japanese women during post-war period: between Advert and Reality: longing for "Happiness" via "Goods".

Olga is teaching history courses about Japan from Meiji period toward period of High Economical Grow is senior lecturer at National University of "Kyiv Mohyla Academy". Also at the moment she is translating her dissertation thesis written in Japanese into English.

Also Olga published her first book of novels from biggest publishing house in Ukraine in her native Ukrainian language. The book call "K(iev)-T(okyo)-L(ove)-S(tory). Japanese story" and it is fiction about life, people and process of growing up in two different countries, Folio Publishing house, Ukraine, September 2010.

She is Senior Scholar at History department, Faculty of Humanity of National University of Kyiv Mohyla Academy (Kyiv, Ukraine) and Associate Research at SOAS, London University, UK.



SISJAC FELLOWS



Alfred HAFT

Alfred Haft is a Project Curator in the Japanese Section of the Department of Asia at the British Museum. In 2010, he was awarded the first Anne van Biema Postdoctoral Fellowship, offered jointly by the Freer Gallery of Art and the Arthur M. Sackler Gallery, Smithsonian Institution, Washington, D.C. During the fellowship, he conducted research on the Pulverer Collection of pre-modern Japanese illustrated books, which now forms part of the Freer Gallery's collection, added to the revisions of his dissertation for publication, and delivered a paper for the Freer's Research-in-Progress series.

Prior to leaving for the fellowship, he presented his research at the workshop held to celebrate the Sainsbury Institute's tenth anniversary, and a separate paper at one of the workshops connected with the shunga project, which is scheduled to culminate in an exhibition at the British Museum in 2013. He also researched and wrote the chapter on Japanese art for *The Art Museum* (forthcoming, Phaidon), and has since assisted in editing several volumes in the new Japanese Visual Culture series published by Brill.

Over the next year, in addition to working on research and editing projects, he looks forward to contributing to the research, curatorial and collections activities of the British Museum's Japanese Section.



Gyewon KIM

Gyewon Kim specializes in modern and contemporary art of Japan and Korea. She completed her PhD in Art History in 2010 from McGill University, on the topic of the mutual formations of photography and historic sites in late nineteenth-century Japan.

In 2010-11, she held a post-doctoral fellowship in Japan-Korean studies from History of Art and Architecture and Asian Studies Center at University of Pittsburgh, where she taught Space and Place in Japan, and Modern and Contemporary Korean Art. Her work centers on vision, media and the politics of knowledge and representation in modern Japan and Korea. Her essay on colonial photography and archive in Japan and Korea has been published in *positions: east asian cultures critique* (18:1, Spring, 2010), and work in progress includes a manuscript on composite portrait, facial type and imperial subjectivity in wartime East Asia.

At the Sainsbury Institute, she is working on her book manuscript, *Registering the Real: Photography and Historic Sites in Late Nineteenth Century Japan*.

ABOUT SISJAC

The Sainsbury Institute (SISJAC) was founded in 1999 through the generosity of Sir Robert and Lady Sainsbury to promote knowledge and understanding of Japanese arts and cultures. As it approaches its tenth anniversary the Institute has formulated a renewed mission statement, which not only reflects the benefactors' intentions and is grounded in their original vision, but aims to expand its intellectual horizons.

The mission of the Sainsbury Institute is to be an active source of and conduit for innovative research: positioning, revealing and interpreting the arts and cultures of the Japanese archipelago from the present to the past in regional, European and global contexts.



The Institute continues its close collaborations with institutional partners including schools of study at the University of East Anglia (UEA), the School of Oriental and African Studies (SOAS), University of London, and the British Museum. It maintains its programme of fellowships, public lectures and international workshops as well as its commitment to the web and web publications.

RESEARCH STUDENTS PURSUING PROJECTS ON JAPAN

Ryoko AOKI

The Construction of Japanese Noh Theatre as a Masculine Art: an Analysis of its Traditional and Modern Discourse
Supervisor: Professor Andrew GERSTLE

Midori ATKINS

Time and Space Reconsidered: Literary Landscape in the Literature of Murakami Haruki
Supervisor: Dr Steve DODD

Kristian BERING

Bakun and the Theatre
Supervisor: Professor Andrew GERSTLE

Lucy GLASSPOOL

Japanese Role Playing Games: Gender and Fandom
Supervisor: Dr Isolde STANDISH

Haruhisa HANDA

Calligraphy and Religious Personality in Early Modern Japan: Hakuin's Life and Writings
Supervisor: Dr John CARPENTER

Mami HATAYAMA

The Meiji Painter and Lacquer Artist Shibata Zeshin
Supervisor: Dr John CARPENTER

Makiko HAYASHI

Constructing the Legal Profession in Meiji Japan
Supervisor: Dr John BREEN

Katsuyuki HIDAKA

Consuming the Past in Film and Television
Supervisor: Dr Isolde STANDISH

Satomi HORIUCHI

Contemporary Japanese Christianity: Ancestors, rites and graves
Supervisor: Dr Lucia DOLCE

Noriko HORSLEY

Court Patronage and the Collecting of Art in 12th century Insei-period Japan
Supervisor: Dr John CARPENTER

Kigensan LICHA

The Esoterization of Soto Zen in Medieval Japan
Supervisor: Dr Lucia DOLCE

Tullio LOBETTI

Faith in the flesh: body and ascetic practices in contemporary Japanese religious context
Supervisor: Dr Lucia DOLCE

Benedetta LOMI

Batō Kannon/Matou Guanyin: cult, images and rituals of the Horse-Headed One
Supervisor: Dr Lucia DOLCE

Shinya MANO

Yōsai and the development of Zen-Esoteric Buddhism
Supervisor: Dr Lucia DOLCE

Barbara MICYK

The supernatural in pre-modern Japanese illustrated fiction
Supervisor: Professor Andrew GERSTLE

Yaara MORRIS

The Cult of Tenkawa Benzaiten – her rituals, texts, and mandalas
Supervisor: Dr Lucia DOLCE

Doreen MUELLER

Documenting Disaster: Pictorial Records of the Late Edo Period (draft title)
Supervisor: Professor Timon SCREECH

Masaaki OKADA

Salvation by beauty and nature: Okada Mokichi's practices
Supervisor: Dr Lucia DOLCE

Taka OSHIKIRI

Gathering for tea in Meiji Japan
Supervisor: Dr Angus LOCKYER

Fumi OUCHI

The vocal arts in medieval Japan and Tendai hongaku thought
Supervisor: Dr Lucia DOLCE

Jenny PRESTON

Nishikawa Sukenobu: The Engagement of Popular Art in Socio-political Discourse in 18th Century Japan
Supervisor: Dr John CARPENTER

Ivan RUMANEK

The appropriation of Noh by Joruri and Kabuki
Supervisor: Professor Andrew GERSTLE

Ryosuke SHIBAGAKI

Secondary Predicates in Japanese
Supervisor: Professor Peter SELLS

Martyn SMITH

Nationalism in postwar Japan
Supervisor: Dr Christopher GERTEIS

Nobuaki TAKASE

Mutsu Munemitsu and the formation of the state in modern Japan
Supervisor: Dr Angus LOCKYER

Eriko TOMIZAWA-KAY

The Nihonga (Japanese-Style) Artist Hishida Shunso (1874-1911)
Supervisor: Dr John CARPENTER

Shino TOYOSHIMA

Making Kunsan Home: Community Building by Japanese Settlers in Colonial Korea
Supervisor: Dr Angus LOCKYER

Carla TRONU MONTANE

The Construction of the Japanese Christian Community in Nagasaki in the sixteenth & seventeenth centuries
Supervisor: Dr Angus LOCKYER

Award Recipients, 2010-11: Final Reports



Kigensan LICHA

Tsuda Bursary

Thesis Title

Esoteric traditions in late medieval Japanese Sôtô Zen Buddhism

Thanks to the Tsuda Bursary, Kigensan has been able to complete his Ph.D. Thesis for examination. He has written two main chapters from the body of the thesis. The first is an extended discussion of Sôtô Zen Dharma transmission rituals. The second presents a historical and textual overview of Sôtô Zen kôan traditions. As well, he has formulated a theoretical approach to the interpretation of kôan. This approach treats them as fully linguistic artifacts and analyzes their function in terms of performative and metaphorical modes of discourse.

In addition to completing his Ph.D., Kigensan also had the opportunity to present his research at a number of international workshops held at SOAS. In February, he delivered a paper on the worship of the deity of Mt. Hakusan in the Sôtô school. In March, he presented part of his Ph.D. research at the Japan Research Centre Seminar under the title "Esoteric Uses of the Yijing in medieval Sôtô Zen". In May he participated in the "Words, Deities and Icons" workshop, presenting his research on embryology in Sôtô Zen. In addition to putting the final touches on his thesis and preparing for his oral examination, Kigensan is currently writing a paper on embryology based on his Ph.D. research. He is preparing a second paper on the use of the work of Italian philosopher Giorgio Agamben in the study of pre-modern Japanese religions.

Kigensan would like to express his gratitude to Ms Kayoko Tsuda and the award committee for their generosity which enabled him focus on his work in its final stages and bring it to a successful conclusion.



Ivan RUMANEK

Meiji Jingu Studentship

Working title

Edo Period Theatre – Offspring of Nô? Etymology of genre.

The aim of his research is to shed more light into the issue of to what extent the emergence of new theatrical genres of kabuki and jôruri at the beginning of the Edo shogunate were connected with the nô tradition.

During his research, Ivan has found out that there exist materials referring to the initial stage of kabuki development, the so called Okuni sôshi that were only publicised relatively recently – at the beginning of the 20th century.

Further study also disclosed a possible Western connection in the process. The Jesuits who were active in Japan in the latter half of the 16th century, seem to have been pretty familiar both with the Japanese language and the culture, including the dramatical arts. The Portuguese dictionaries compiled in the period testify to it. By them, nô was regarded as a general representative of the dramatical art, even the Western concepts of "theatre" and "drama" were translated by means of the Japanese term "nô". This situation faithfully reflects the previous knowledge because there was no other contemporary counterpart of "theatre" outside nô at the turn of the 16th century. Things were about to change soon, though, and the emergence of Izumo no Okuni and her advance onto the stages of the Imperial Capital marked a breakthrough in the history of Japanese theatre, on which Ivan's further research will go on focusing.



Martyn SMITH

Meiji Jingu Studentship

Working title

The Discourse on the Nation in Postwar Japan 1952-1972

My research focuses on the debate and discussion of ideas of nation in Japan in the 1950's and 1960's. By looking at popular magazines and newspapers at four specific points in the postwar period I examine how differing ideas of nation reflected and shaped the huge social and economic changes which constituted the everyday experience of the Japanese people.

Using popular magazines aimed at housewives (Fujin Kôron, Fujin Gaho) and young people (Shukan Heibon, Heibon Punch), as well as picture magazines such as Asahi Graph and Mainichi Graph, my research broadens the debate over postwar Japanese ideas of nation by looking at the way these ideas developed within the context of rapid social, economic, and cultural change from 1952-1972 focusing on four pivotal historical moments: the end of the Allied Occupation in 1952; the protests leading up to the renewal of the security treaty (ANPO) in 1960; the Tokyo Olympics of 1964; and student and anti-war protests from 1968 to the 'return' of Okinawa.

Over the past academic year I have been able to examine a wide range of sources which have helped to show the ambiguous and continually changing nature of ideas of nation. With the rapid growth of the economy and the emergence of a mass consumer society after the hardship of the immediate post-surrender, ideas of nation broadened from the domain of intellectual discussion to more a popular and contingent identification. My research will continue to focus on the intersection of these ideas with a rapidly developing consumer society.

Award Recipients, 2011-12



Jenny PRESTON

Tsuda Bursary

Thesis title

Nishikawa Sukenobu: the engagement of popular art with socio-political discourse

Abstract

This research focuses on the illustrated books (ehon) of the eighteenth century Kyoto artist Nishikawa Sukenobu. Between 1710 and 1722, Sukenobu published some fifty erotic works; following the Kyōhō reforms of 1722 outlawing erotica, he began producing works generally categorized as fūzoku ehon – versions of canonical texts, poems and riddles, all executed in a contemporary idiom. This study contends that these works were an expression of political disaffection; that Sukenobu used first the medium of the erotic, then the image-cum-text format of the children's book to articulate anti-bakufu and pro-imperialist sentiment.

This radical re-reading of Sukenobu's work is supported by close reference to the literary output of his numerous collaborators, to contemporary diary and pamphlet literature, and to the corpus of Edo and Kyoto machibure edicts. The study will hopefully shed new light on the role of popular art in the eighteenth century, and its profound political engagement.



Radu LECA

Meiji Jingu Studentship

Working Title

Images of alterity in the Japanese spatial imaginary of the 17th century

Outline of the project

My research aims at a reconsideration of the genesis of Genroku period art, by focusing on visual representations of alterity in popular culture. I study the role of exotic tropes in the emergence of a national visual identity formulated in terms of a Japan-centered worldview.

Introduction to the research

The first part of the research analyzes the geographic imaginary of 17th century Japan, by tracing the abundance and the iconographical amalgamations between various types of imaginary places, such as Mount Hōrai and Nyogonoshima. Because of the ambivalent utopic/dystopic character of many of these places, Radu proposes to discuss them in terms of Foucault's concept of heterotopias.

The second part will discuss the liminal character of the feminine image, epitomized by the female-only island of Nyogonoshima. The relationship between the 'Chinese' exotic and female heterotopias will be explored in the work of Asai Ryōi and Ihara Saikaku. Radu will then examine the role of this heterotopic imagery in the development of the feminine imagery of ukiyo-e, focusing on the work of Hishikawa Moronobu.

Radu's research is therefore aimed at deepening the understanding of Japanese images of alterity, and exploring their influence on Genroku period art.

The main sources for this research will be text illustrations which reveal elements of the popular imagination otherwise 'invisible' in written texts. While employing elements of literary and art history, Radu aims to use these visual sources as pivots for a cultural studies approach to the popular spatial imaginary of the period.



Alessia COSTA

Meiji Jingu Studentship

Working Title

Body Assemblages: Bioethics and Organ Donation in Japan

Outline of the project

My research aims at investigating issues of body ownership in the light of the recent revision of the Japanese policy on organ donation. The project draws on the growing debate on bioethics and biotechnologies in anthropology and social sciences, and involves a period of ethnographic research in Tokyo starting in September 2011.

Introduction to research

In Japan, organ transplantation and the so-called 'brain-death problem' (nōshi mondai) have been the subject of a widespread debate since the late 1960s, encompassing patients' organizations, medical experts and political institutions. The Japanese debate on transplantation technology shed a new light on un-examined assumptions which had gone largely un-challenged in many western countries. However, whereas the disputes that lead to the endorsement, in 1997, of Law 104 on Organ Transplants (Zōki Ishoku Ni Kansuru Hōritsu) have been widely discussed, very little has been written about more recent developments.

In 2009, the law has been amended introducing important changes. In the light of such developments, this project aims to investigate the current policy on donation focusing in particular on issues of body ownership and next of kin rights. The project builds on the growing body of research on biomedical science and technologies in social sciences, while also engaging critically with the anthropological literature on Japan. Furthermore, it involves an extensive period of ethnographic research in Tokyo starting from September 2011.

AWARDS AND GRANTS

SIXTH ANNUAL KAYOKO TSUDA BURSARY 2012-2013

The Japan Research Centre is pleased to invite applications to the bursary created through the generosity of Ms Kayoko Tsuda.

Applicants may be of any nationality and in need of the bursary to fund completion of their thesis. The bursary will be awarded to students writing up their PhD dissertations at SOAS in either their third or fourth year during the academic session 2011/12. Those working on any aspect of Japanese studies are eligible.

One bursary is offered per year, carrying a value of £7,000 (untaxed).

Closing Date
Friday, 25 May 2012

How to Apply
More information can be obtained from:

www.soas.ac.uk/registry/scholarships

The Scholarships Officer
Registry
SOAS, University of London
Thornhaugh Street
Russell Square
London WC1H 0XG

Email: scholarships@soas.ac.uk

MEIJI JINGU SCHOLARSHIPS 2012 - 13

Two awards are offered annually, either for PhD students at SOAS, or newly enrolling full-time MPhil students, who have been accepted by SOAS.

Students may be registered in any department, and be of any nationality, but must be working on some aspect of Japanese Studies. PhD candidates must be resident in SOAS: the award cannot be used elsewhere.

Studentships are worth £5,000, and carry a 20% reduction of fees (EU or Overseas).

Closing Date
Friday, 25 May 2012

How to Apply
More information can be obtained from:

www.soas.ac.uk/registry/scholarships

The Scholarships Officer
Registry
SOAS, University of London
Thornhaugh Street
Russell Square
London WC1H 0XG

Email: scholarships@soas.ac.uk

MEIJI JINGU JAPANESE STUDIES RESEARCH GRANTS FOR SOAS STAFF

Grants are offered to assist full-time academic staff members of the JRC, SOAS, to promote Japanese Studies.

Funds may be used for personal research, conferences, etc, or to purchase research-level books for the SOAS Library. Group projects are acceptable, but should be submitted in the name of one representative individual.

Total subsidy of up to £2,200 will be offered in any one calendar year, for the duration of the agreement, to be divided between successful applicants. Awards will be assessed according to their importance for Japanese studies, as interpreted by the Steering Committee of the JRC. The Committee, together with the approval of Meiji Jingu, will decide who the successful applicant will be.

Closing Date
The first closing date for applications will be Friday, 25 May 2012.

If not all funds have been allocated, a second round will be held, with a closing date in late October, 2012.

How to Apply
The application form is available to download from the JRC web page, or email Jane Savory, js64@soas.ac.uk

www.soas.ac.uk/jrc/awards-and-grants

Research & Enterprise

Executive Training Programme (ETP) for Japan and Korea

At the beginning of this year SOAS was awarded a contract worth almost €600,000 by the European Commission to deliver the next 3 cycles of the Executive Training Programme (ETP) for Japan and Korea. The SOAS bid was coordinated by the Enterprise Office, bringing together academics from the Japan Research Centre and Centre for Korean Studies and drawing on a wide range of subject expertise including history, politics, economics, religion, business and management, culture and the arts. Feedback from the European Commission indicated that the existence of regional centres to pool and coordinate this expertise was one of the key reasons for success.

The ETP is a prestigious year-long programme for executives from European companies who are looking to establish or further develop business relations with Japan or Korea. The Japan programme has been running for over 30 years and has produced over 1,000 alumni, many of whom are now working at the most senior levels in Japan-based companies. The Korean programme was launched seven years ago to capitalise on the success of the Japan programme and to take advantage of the business opportunities between EU countries and Korea.

SOAS was involved in the 3 previous cycles of the Executive Training Programme,

delivering intensive Japanese and Korean language training to up to 60 executives from across the European Union. The revamped programme will be delivered in Autumn 2012 and will entail a 3-week programme to provide a similar cohort with a broad overview of the key historical, economic, political, business and cultural issues relating to Japan or Korea. Participants will then progress to an immersion module at Waseda University in Tokyo or Yonsei University in Seoul where they will undertake intensive language and management training, develop a business plan and attend a 3-month internship in a Japanese or Korean company related to their business.

The Enterprise Office are working closely with the 2 regional centres over the coming months to prepare the first programmes, which will be coordinated on the academic side by Angus Lockyer and Helen Macnaughtan for the Japan programme and Jaehoon Yeon and Anders Karlsson for the Korean programme.

Further information:
Louise Roberts, louiseroberts@soas.ac.uk



**RESEARCH OFFICE:
External Grant Applications
1 Sept 2010 - 31 July 2011**

Christopher GERTEIS
The SOAS / Japan Forum European
Translation Initiative
Funding Body: Nippon Foundation
Fundable Amount: £56,800

Gaynor SEKIMORI
Documenting Religion: A Festival of
Films about Shugendo, in memory of
Dr Carmen Blacker

Funding Body: Japan Society
Fundable Amount: £500

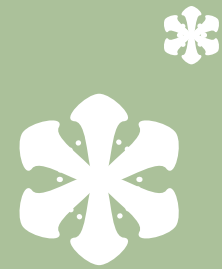
Funding Body: Japan Foundation
Fundable Amount: £1,000

Funding Body: Great Britain
Sasakawa Foundation
Fundable Amount: £1,500



Research and Enterprise activities are central to SOAS' mission. Not only do they enhance teaching and learning, they are also a crucial part of the services that we provide to the world around us. Research establishes new knowledge which extends the frontiers of human understanding and informs and sharpens scholarly debate. When this knowledge is transferred externally it shapes the policy and practice of governments, businesses, NGOs and informs the wider community. The Research and Enterprise Office (REO) at SOAS works across the School to secure external funding and income, to support research excellence and to facilitate knowledge transfer.

www.soas.ac.uk/reo/



Japanese Roof Garden



The Japanese-inspired roof garden at the School of Oriental and African Studies was built during the Japan 2001 celebrations and was officially opened by the sponsor, Mr Haruhisa Handa (Toshu Fukami), an Honorary Fellow of the School, on 13 November 2001. It provides an area away from the noise and bustle of London streets, where visitors can relax and meditate.

The garden is dedicated to Forgiveness, which is the meaning of the Kanji character engraved on the garden's granite water basin.

Peter Swift, a designer with experience of adapting Japanese garden design princi-

ples to the British environment and climate, conceived the garden as a place of quiet contemplation and meditation as well as a functional space complementary to the Gallery and its artistic activities.

A small stage can be used for dramatic or musical productions, for tea ceremonies or displays. Or it can be used simply as seating. Planting has been kept to a minimum, with lemon thyme used in a chequerboard pattern at the north end of the garden and the climbing wisteria to provide cool shade during the summer. Various types of stone are used in the garden: a sweeping curve blends the original rectangular sandstone with the irregular green slate; the central area of

raked silver grey granite chippings has regular slabs of basaltic rock alluding to a bridge over flowing water; the island stones in the gravel areas are Larvikite from Norway; dark grey pebbles from a contrast in colour and texture to the formal granite edging and to the chequerboard planting.

The garden is open to the public and can be enjoyed as a place of peace and meditation. It may also be used for events such as receptions, small plays, Noh dramas, sculpture exhibitions and flower displays.

For visiting times and more information:
www.soas.ac.uk/visitors/roofgarden/



Join the Centre

JAPAN RESEARCH CENTRE

The Japan Research Centre (JRC) develops and coordinates academic research and teaching, drawing upon the expertise of the Japan specialists who are based in various departments throughout the School. The fields covered by academic members of staff include anthropology, art and archaeology, drama, economics, economic history, geography, history, language and literature, law, media, music, linguistics, politics, religion and sociology. With the largest concentration of Japan specialists outside Japan, the JRC acts as a national and international centre for Japanese studies.

Mailing List

If you would like to be added to the JRC mailing list and receive information on the seminars and events organised by the Centre of Chinese Studies please send an email to centres@soas.ac.uk with your name.

You can download the current, and past, editions of the JRC Annual Review from:
www.soas.ac.uk/jrc/newsletter/



Japan Research Centre
www.soas.ac.uk/jrc

SOAS
University of London
Thornhaugh Street
Russell Square
London WC1H 0XG

Tel: +44 (0)20 7898 4893/2
Fax: +44 (0)20 7898 4489
Email: centres@soas.ac.uk

Chair: Dr Steve Dodd
Email: sd5@soas.ac.uk

Centres and Programmes Office
Manager: Jane Savory
Tel: +44 (0)20 7898 4892
Fax: +44 (0)20 7898 4489
E-mail: js64@soas.ac.uk

Executive Officer: Rahima Begum
Tel: +44 (0)20 7898 4893
Fax: +44 (0)20 7898 4489
E-mail: rb41@soas.ac.uk



Centre events can be found at:
www.soas.ac.uk/jrc/events/

Produced by the Centres and Programmes Office, SOAS



Editorial:
Jane Savory

Design:
Rahima Begum



Printed by SOAS Print Room

SOAS
University of London
Thornhaugh Street
Russell Square
London WC1H 0XG

Tel: +44 (0)20 7637 2388

www.soas.ac.uk