

## Classmarks (selected)

Use online Location List to find stack numbers for books:

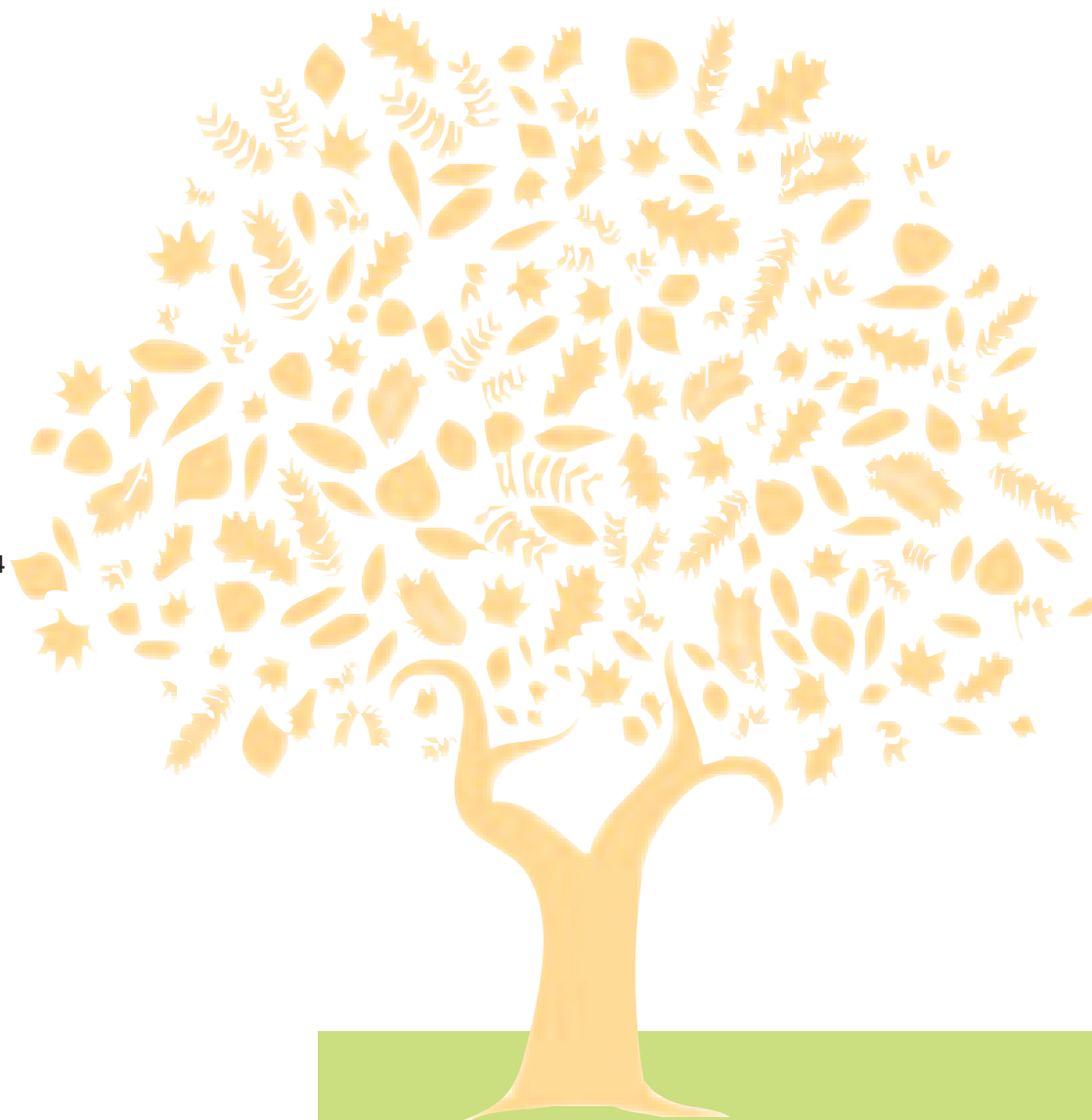
<https://library.soas.ac.uk/Locationlist>

Books prefixed **L** or **Ref** are separately located

Agriculture	A 338.1
Aid	A 338.91
Anthropology of development	A 306.3
Children	A 305.23
Cities and towns	A 307.76
Communities	A 307
Community development	A 307.14
Cost-benefit analysis	A 658.1554
Developing countries	
Economic conditions	A 330.91724
Environment	A333.7
General	A 909.09724
Politics	A 320.91724
Economic development	A 338.9
Gender	A 305.3
Imperialism	A 325.32
Industrialization	A 338.091724
Marxism	A 335.4
Migration	A304.8
Natural resources	A 333.7
NGOs	
International	A 361.77
Political geography	A 910.133
Poverty	
Economic aspects	A 339.46
Social aspects	A 362.5
Refugees	
Social welfare	A 362.87
Rural development	A 338.91724
Social theory	A 301
Survey methods	A 300.723

# Development Studies

classmark **A**



## Level E

## Coverage

- General and theoretical works
- Works covering more than one region
- Works on countries outside Asia & Africa

Note: Development Studies in specific countries and regions -  
located in country or regional collections

## Online resources

EBSCO Discovery Service (EDS)

[www.soas.ac.uk/library/resources/ebsco-discovery-service/](http://www.soas.ac.uk/library/resources/ebsco-discovery-service/)

A-Z databases

[www.soas.ac.uk/library/resources/a-z/](http://www.soas.ac.uk/library/resources/a-z/)

A-Z electronic journals

[www.soas.ac.uk/library/resources/ejournals/](http://www.soas.ac.uk/library/resources/ejournals/)

Subject guide

[www.soas.ac.uk/library/subjects/](http://www.soas.ac.uk/library/subjects/)

## Special Collections

(Special Collections Reading Room, Level F)

Information at [www.soas.ac.uk/library/archives/](http://www.soas.ac.uk/library/archives/)

Contact: [special.collections@soas.ac.uk](mailto:special.collections@soas.ac.uk) - tel 020 7898 4180

## Subject librarians for the regions

### **Africa**

Dawn Wright

[dw3@soas.ac.uk](mailto:dw3@soas.ac.uk) - tel 020 7898 4158

### **Ancient Near East, Semitics & Judaica**

Carlos Leo Roca

[cr44@soas.ac.uk](mailto:cr44@soas.ac.uk) - tel 020 7898 4167

### **China & Inner Asia**

Ludi Price

[lp27@soas.ac.uk](mailto:lp27@soas.ac.uk) - tel 020 7898 4156

### **Japan & Korea**

Jiyeon Wood

[jw50@soas.ac.uk](mailto:jw50@soas.ac.uk) - tel 020 7898 4175

### **Middle East, Central Asia & Islamica**

Carlos Leo Roca

[cr44@soas.ac.uk](mailto:cr44@soas.ac.uk) - tel 020 7898 4167

### **South Asia**

Burzine Waghmar

[bw3@soas.ac.uk](mailto:bw3@soas.ac.uk) - tel 020 7898 4144

### **South East Asia & Pacific Islands**

Jotika Khur-Yearn

[jk53@soas.ac.uk](mailto:jk53@soas.ac.uk) - tel 020-7898 417

See specific guide for each region