

# Religions

classmark **A**

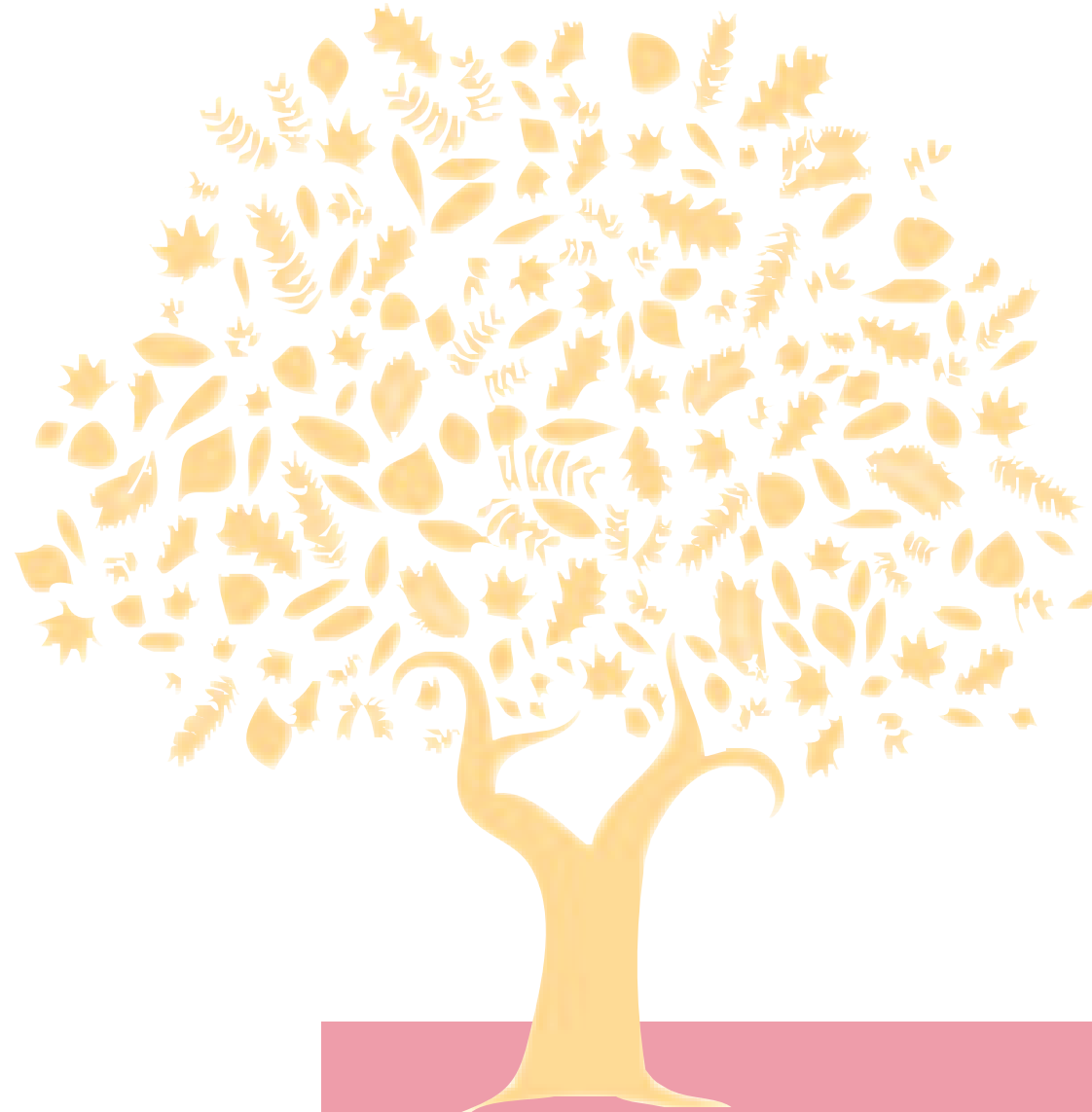
## Classmarks (selected)

Use online Location List to find stack numbers for books:

<https://library.soas.ac.uk/Locationlist>

Books prefixed **L** or **Ref** are separately located

- |                                  |         |
|----------------------------------|---------|
| • History of religions           | A200s   |
| • Missions & missionaries        | A266s   |
| • Colonialism & decolonization   | A325.3s |
| • Slavery & the slave trade      | A326s   |
| • Economic history               | A330.9  |
| • History of medicine            | A610.9  |
| • Philosophy & theory of history | A901    |
| • Historiography & research      | A907    |
| • World history & imperialism    | A909    |
| • Geography & travel             | A910    |
| • Exploration & travel           | A910.8s |
| • Memoirs & biography            | A910.92 |
| • Ancient history (general)      | A930s   |
| • European history (general)     | A940s   |
| • British history                | A942    |
| • Byzantium [also at QT]         | A949.5s |
| • Asian history (general)        | A950s   |
| • American history (general)     | A970s   |



**Level E**  
& regional collections

subject librarian  
Farzana Whitfield (room E10)  
fq@soas.ac.uk - tel 020 7898 4153

## Coverage

- Anthropology, sociology and philosophy of religion
- Comparative religious studies in Asia & Africa
- Works on religion outside Asia & Africa
- Buddhism and Christianity (general)

Excludes:

- Islam (N) and Judaism (QO) - collections on Level B

Note: Religions in specific countries and regions - located in country or regional collections

## Online resources

EBSCO Discovery Service (EDS)

[www.soas.ac.uk/library/resources/ebSCO-discovery-service/](http://www.soas.ac.uk/library/resources/ebSCO-discovery-service/)

A-Z databases

[www.soas.ac.uk/library/resources/a-z/](http://www.soas.ac.uk/library/resources/a-z/)

A-Z electronic journals

[www.soas.ac.uk/library/resources/ejournals/](http://www.soas.ac.uk/library/resources/ejournals/)

Subject guide

[www.soas.ac.uk/library/subjects/](http://www.soas.ac.uk/library/subjects/)

## Special Collections

(Special Collections Reading Room, Level F)

Relevant collections include

- Council for World Mission (London Missionary Society)
- Methodist Missionary Society

Information at [www.soas.ac.uk/library/archives/](http://www.soas.ac.uk/library/archives/)

Contact: [special.collections@soas.ac.uk](mailto:special.collections@soas.ac.uk) - tel 020 7898 4180

## Regional collections

(see separate guides for specific regions)

- Africa Level D
- Ancient Near East, Semitics & Judaica Level B
- China & Inner Asia Level C
- Japan Level C
- Korea Level D
- Middle East, Central Asia & Islamica Level B
- Pacific Islands Level F
- South Asia Level A
- South East Asia Level C

## Subject librarians

### Africa

Dawn Wright

[dw3@soas.ac.uk](mailto:dw3@soas.ac.uk) - tel 020 7898 4158

### Ancient Near East, Semitics & Judaica

Carlos Leo Roca

[cr44@soas.ac.uk](mailto:cr44@soas.ac.uk) - tel 020 7898 4167

### China & Inner Asia

Ludi Price

[lp27@soas.ac.uk](mailto:lp27@soas.ac.uk) - tel 020 7898 4156

### Japan & Korea

Jiyeon Wood

[jw50@soas.ac.uk](mailto:jw50@soas.ac.uk) - tel 020 7898 4175

### Middle East, Central Asia & Islamica

Carlos Leo Roca

[cr44@soas.ac.uk](mailto:cr44@soas.ac.uk) - tel 020 7898 4167

### South Asia

Burzine Waghmar

[bw3@soas.ac.uk](mailto:bw3@soas.ac.uk) - tel 020 7898 4144

### South East Asia & Pacific Islands

Jotika Khur-Yearn

[jk53@soas.ac.uk](mailto:jk53@soas.ac.uk) - tel 020-7898 417

See specific guide for each region